

Product Comparison Table



Indoor access point



Model Number	ECW100	ECW5210-L	ECW5211-L	ECW5410-L
Wi-Fi	11ac	11ac	11ac wave2	11ac wave2
Radios	2.4GHz, 5GHz	2.4GHz, 5GHz	2.4GHz, 5GHz, BLE	2.4GHz, 5GHz, BLE
MIMO	2x2:2	3x3:3	2x2:2	4x4:4
PoE Specification	802.3af	802.3at	802.3af	802.3at
Uplink Ports	1 x GbE (PoE)	1 x GbE (PoE)	1 x GbE (PoE)	1 x GbE (PoE)
LAN Ports	1 x GbE	--	1 x GbE	1 x GbE
Other Ports	1 x Pass-Through RJ11	--	1 x USB 2.0	1 x RJ45 Console Port 1 x USB 2.0
Antenna	Built-in	Built-in	Built-in	Built-in
ESSIDs	16	32	32	32
Max. Power Consumption	8W	17W	9W	22.5W
Mounting	In-Wall	Wall / Ceiling Mount	Wall / Ceiling Mount	Wall / Ceiling Mount
Dimensions (H x W x D; cm)	US: 11.5 x 7.0 x 4.0 EU: 8.5 x 8.5 x 4.0	18.0 x 18.0 x 4.4	14.7 x 14.7 x 3.5	19.0 x 19.0 x 3.3
Weight	0.12 kg	0.61 kg	0.36 kg	0.61 kg

Express Wi-Fi Certified Access Point

Outdoor access point



Model Number	ECWOS210-L	ECWOS211-L	ECWOS212-L	ECWOS213-L	OAP100
Wi-Fi	11ac	11ac wave2	11ac	11ac wave2	11ac wave2
Radios	2.4GHz, 5GHz	2.4GHz, 5GHz, BLE	2.4GHz, 5GHz	2.4GHz, 5GHz, BLE	2.4GHz, 5GHz, BLE, LTE (Optional)
MIMO	3x3:3	2x2:2	2x2:2	2x2:2	2x2:2
GPS	--	Yes	--	Yes	Yes
PoE Specification	802.3at	802.3at	802.3at	802.3at	802.3at
Uplink Ports	1 x GbE (PoE)	1 x GbE (PoE)	1 x GbE (PoE)	1 x GbE (PoE)	1 x GbE (PoE)
LAN Ports	1 x GbE (802.3af downlink PoE)	1 x GbE	1 x GbE	1 x GbE	1 x GbE (802.3af downlink PoE)
Other Ports	1 x RJ45 Console Port / 1 x Vent	1 x Vent	1 x Vent	1 x Vent	1 x RJ45 Console Port / 1 x Vent
Antenna	6 x External N-type connectors	4 x External N-type Connectors Built-in Antenna for BLE & GPS	Built-in (2.4 GHz) 2 x External RPSMA Connectors (5 GHz)	Built-in (2.4 & 5GHz) Built-in Antenna for BLE & GPS	Option I: Built-in Omni (2.4GHz), Azimuth & Elevation 20° (5GHz) Option II: Built-in Azimuth 130° & Elevation 30° (2.4 GHz), Azimuth 90° & Elevation 30° (5GHz) Built-in Antenna for BLE & GPS N-Type Female Connectors for LTE
ESSIDs	32	32	32	32	32
Max. Power Consumption	22W	20W	16W	20W	27.1W
Mounting	Pole Mount	Pole mount	Wall / Pole mount	Pole mount	Pole mount
IP Rating	IP68	IP68	IP68	IP68	IP68
Operating Temperature	-30°C (-22°F) ~ 70°C (158°F)	-40°C (-40°F) ~ 65°C (149°F)	-10°C (14°F) ~ 50°C (122°F)	-40°C (-40°F) ~ 65°C (149°F)	-40°C (-40°F) ~ 65°C (149°F)
Dimensions (H x W x D; cm)	25.0 x 20.0 x 7.4	25.0 x 20.0 x 8.0	16.3 x 16.3 x 4.7	25.0 x 20.0 x 8.0	45.0 x 23.0 x 7.0
Weight	2.80 kg	1.49 kg	0.35 kg	1.23 kg	2.10 kg

Express Wi-Fi Certified Access Point

Wireless Lan controller



Model Number	EWSS101	EWSS203	EWSS204	EWSS207	EWSS1000
Managed APs	50	300	1,000	3,000	10,000
Local Accounts	2,000	10,000	30,000	50,000	120,000
On-Demand Accounts	2,000	10,000	30,000	50,000	120,000
Max. Number of Online Users	200	3,000	10,000	30,000	100,000
Form Factor	7.5" Desktop	19" Rack-mount (1U)	19" Rack-mount (1U)	19" Rack-mount (2U)	19" Rack-mount (2U)
WAN Ports	1 x GbE	2 x GbE or 2 x 1G SFP	2 x GbE ; 2 x 1G SFP	2 x GbE ; 2 x 10G SFP+	2 x GbE ; 2 x 10G SFP+
LAN Ports	4 x GbE	8 x GbE	6 x GbE ; 2 x 1G SFP	6 x GbE ; 2 x 10G SFP+	6 x GbE ; 2 x 10G SFP+
High Availability	No	Yes	Yes	Yes	Yes
Power	DC Input: 12V / 1A	Input: 100-240 VAC	Input: 100-240 VAC	Input: 100-240 VAC	Input: 100-240 VAC
LED Indicator	Power, Status	Power, Status	Power, HDD	Power, Power Error, HDD, System Standby	Power, Power Error, HDD, System Standby
Buttons	Restart / Reset	Restart / Reset	Restart	Restart	Restart
LCD Display	No	No	Yes	Yes	Yes
Operating Temperature	0°C (32°F) ~ 40°C (104°F)	0°C (32°F) ~ 40°C (104°F)	0°C (32°F) ~ 40°C (104°F)	0°C (32°F) ~ 40°C (104°F)	0°C (32°F) ~ 40°C (104°F)
Operating Humidity	5% ~ 95% non-condensing	10% ~ 90% non-condensing	10% ~ 90% non-condensing	10% ~ 90% non-condensing	10% ~ 90% non-condensing
Dimensions (W x D x H; cm)	19.0 x 13.3 x 3.3	44.0 x 28.0 x 4.4	43.8 x 30.0 x 4.4	43.8 x 47.0 x 8.8	43.8 x 47.0 x 8.8
Weight	0.56 kg	2.6 kg	5.2 kg	19.00 kg	19.00 kg

*Capacity limits may vary depending on configuration parameters

Hotspot gateway @ ticketing



Model Number	ECH502
Wireless Standard	11ac wave2
Radios	2.4GHz, 5GHz, BLE
MIMO	2x2:2
ESSIDs	8
Uplink Ports	1 x GbE (PoE)
LAN Ports	1 x GbE
Other Ports	1 x USB 2.0
Mounting	Wall / Ceiling Mount
Authentication Types	802.1X / UAM (browser-based) / IP or MAC-based
Authentication Servers	Local / On-Demand / Guest / RADIUS
Social Media Login	Facebook / Google+ / Line / Open ID
Dimensions (W x D x H; cm)	14.7 x 14.7 x 3.5
Weight	0.55 kg



Model Number	EC-PP200
Power	Input: 24 VDC / 2.5A
Interfaces	Serial: 1 x RS-232 port / RJ45 Ethernet port
Print Method	Thermal line printing
Print Speed	250 mm/sec
Print Life	100 km
Dimensions (W x D x H; cm)	17.6 x 14.6 x 12.4
Operating Temperature	0°C (32°F) to 45°C (113°F)
Operating Humidity	0% to 80% non-condensing

INTEGRATED WI-FI SOLUTION

Designed for Managed Service Provider (MSPs), Enterprise, and Hotspots



Additional information : Email: sales@edge-core.com
Tel: +886-3-563-8888 | +1-949-336-6801 (Irvine,CA)

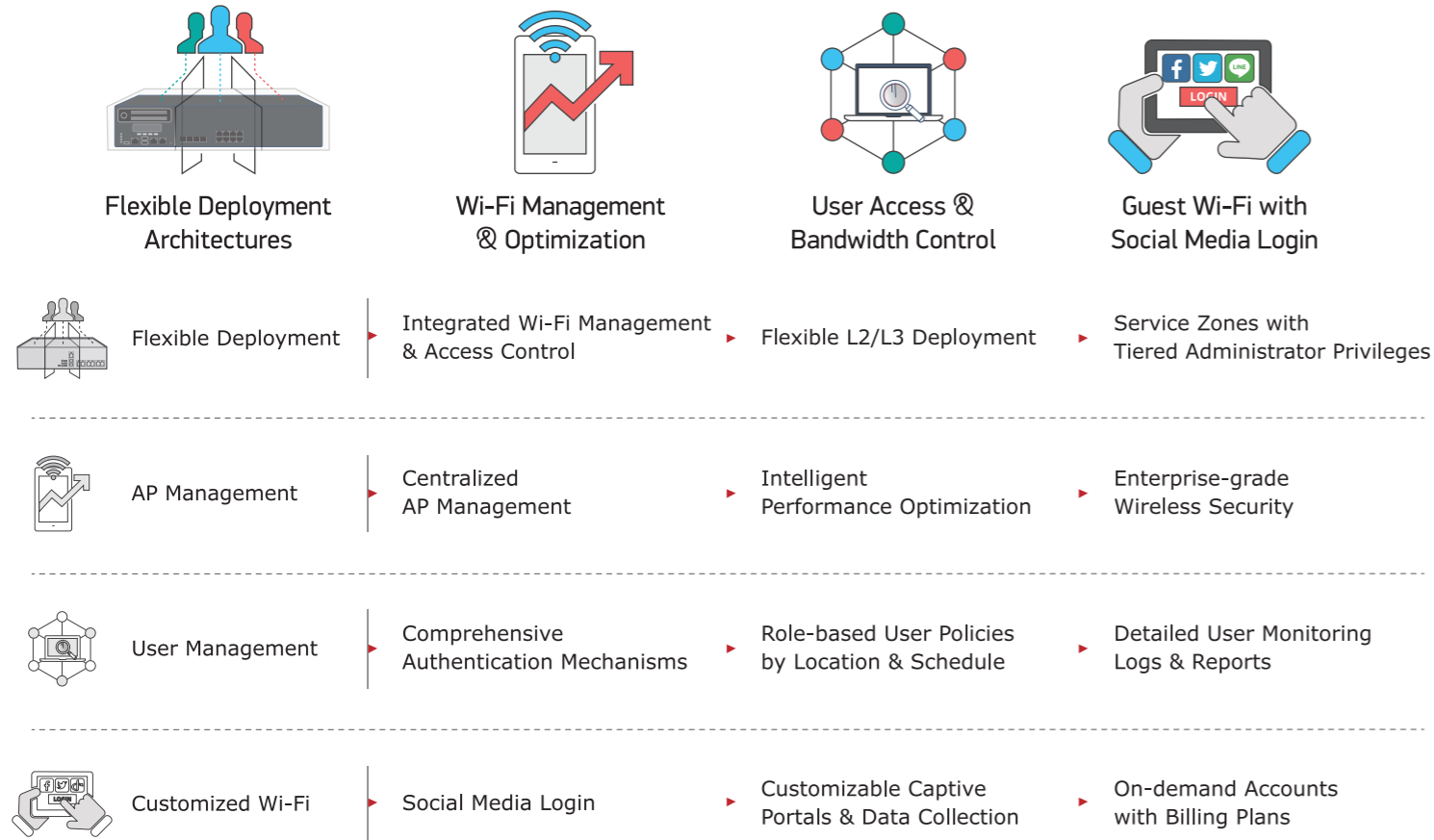
© Copyright 2020 Edgecore Networks Corporation. The information contained herein is subject to change without notice. This document is for informational purposes only and does not set forth any warranty, expressed or implied, concerning any equipment, equipment feature, or service offered by Edgecore Networks Corporation. Edgecore Networks Corporation shall not be liable for technical or editorial errors or omissions contained herein.

Overview

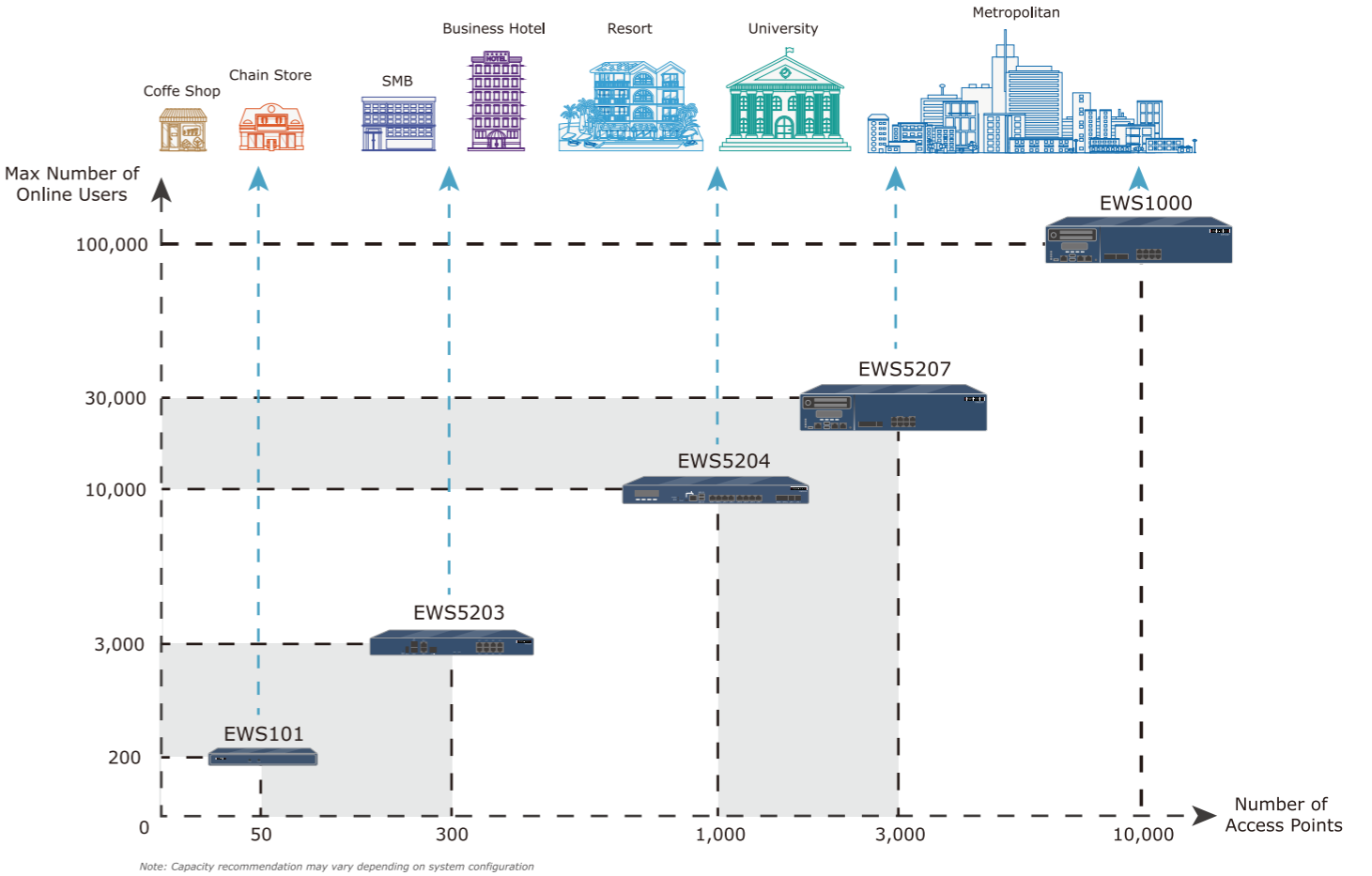
Be connected on the move with high-bandwidth. With fast growing on the smart phone and tablets, people are always looking for high-bandwidth access to share their photo/video on the move. Reliable and fast Wi-Fi became essential and cost-effective infrastructure on different indoor and outdoor environment.

Focusing on enterprise, campus and hospitality market, Edgecore Networks offers the integrated managed Wi-Fi solutions to meet enterprise and hospitality environment with robust Wi-Fi performance, user-friendly and advanced security for users through its affordable controller-based Wi-Fi solutions.

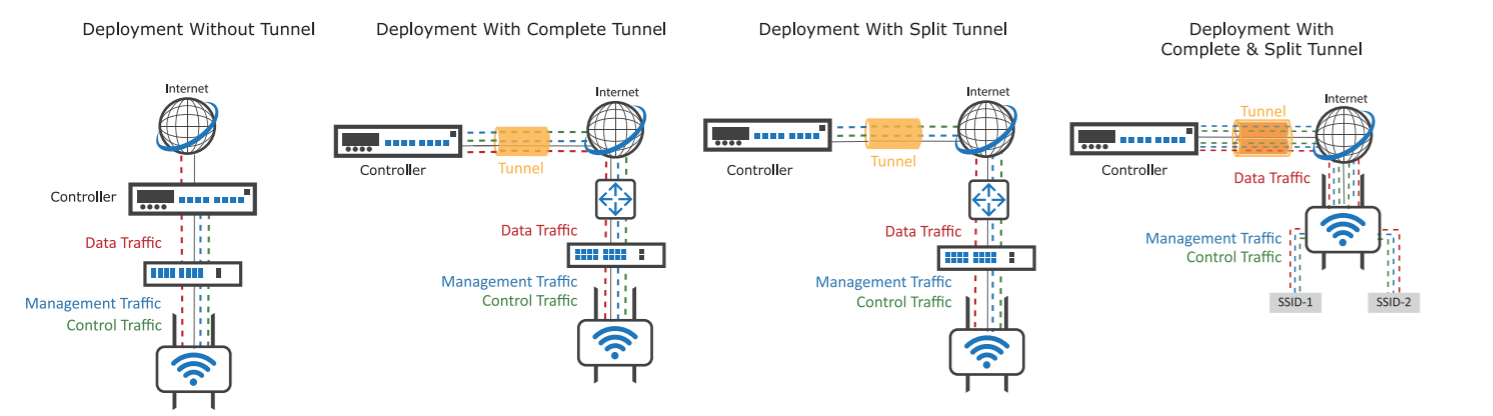
Features and Benefit



Gateway-Controller Deployment Guide



Solution Architecture



Authentication Mechanisms

