

# MAIPU SDN

## BD-LAN SOLUTION INTRODUCTION

Maipu Communication Technology Co., Ltd.

迈普大厦



# CONTENTS

**01** | MAIPU BD-LAN SOLUTION HIGHLIGHTS

**02** | MAIPU BD-LAN PRODUCT PACKAGES

**03** | MAIPU BD-LAN TYPICAL SCENARIOS ANALYSIS

# 01 | MAIPU BD-LAN SOLUTION HIGHLIGHTS

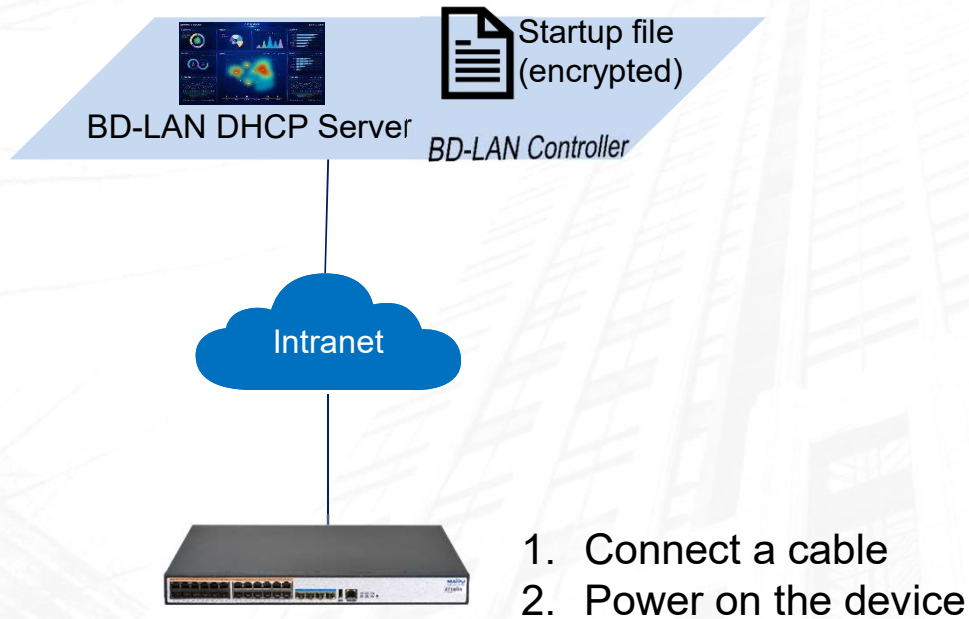
- Automation
- Network Security
- Network Insights



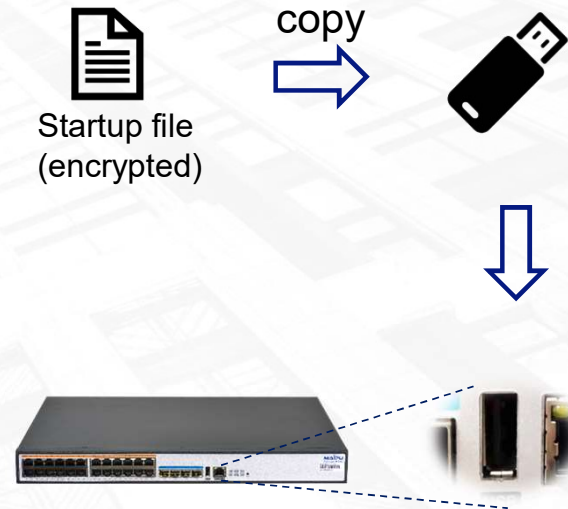
# Automation



# AUTOMATION: ZERO TOUCH PROVISIONING



**Method 1:** ZTP with DHCP Server



1. Plug in the USB flash driver
2. Power on the device

**Method 2:** ZTP with USB Flash Driver

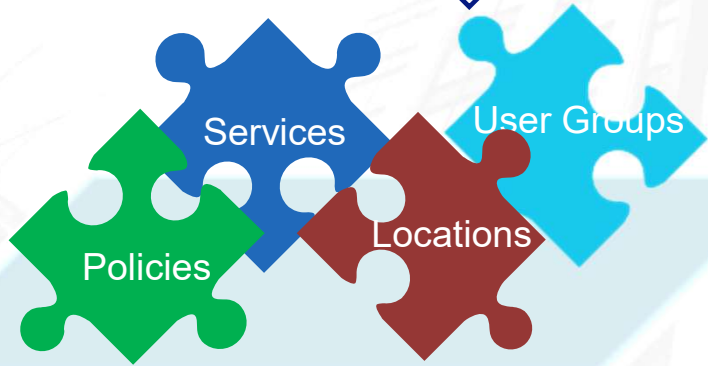
# AUTOMATION: SERVICE AUTO IMPLEMENTATION

## 1 Define your services on BD-LAN Controller



4W1H

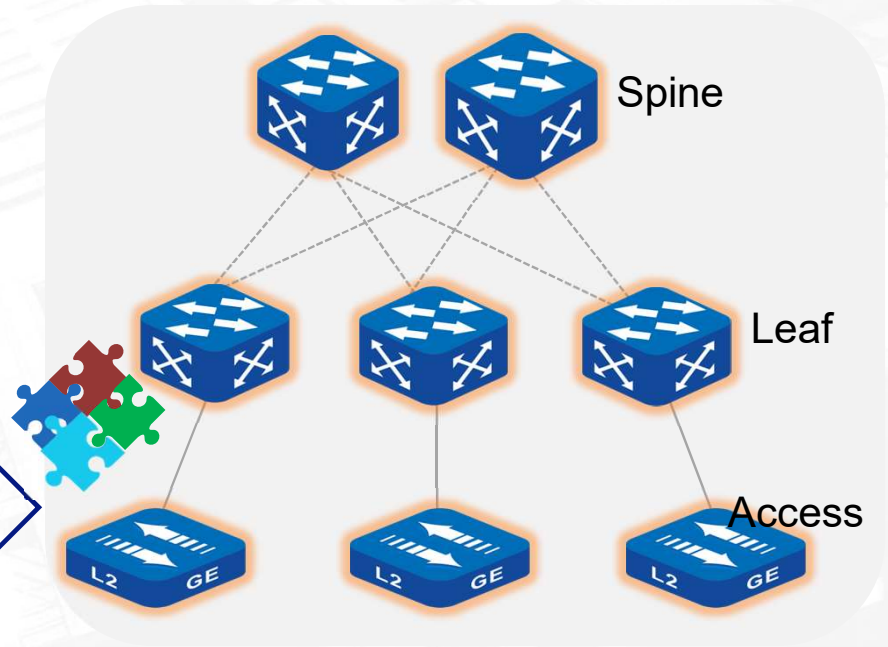
## 2 Combination(Auto)



BD-LAN Controller

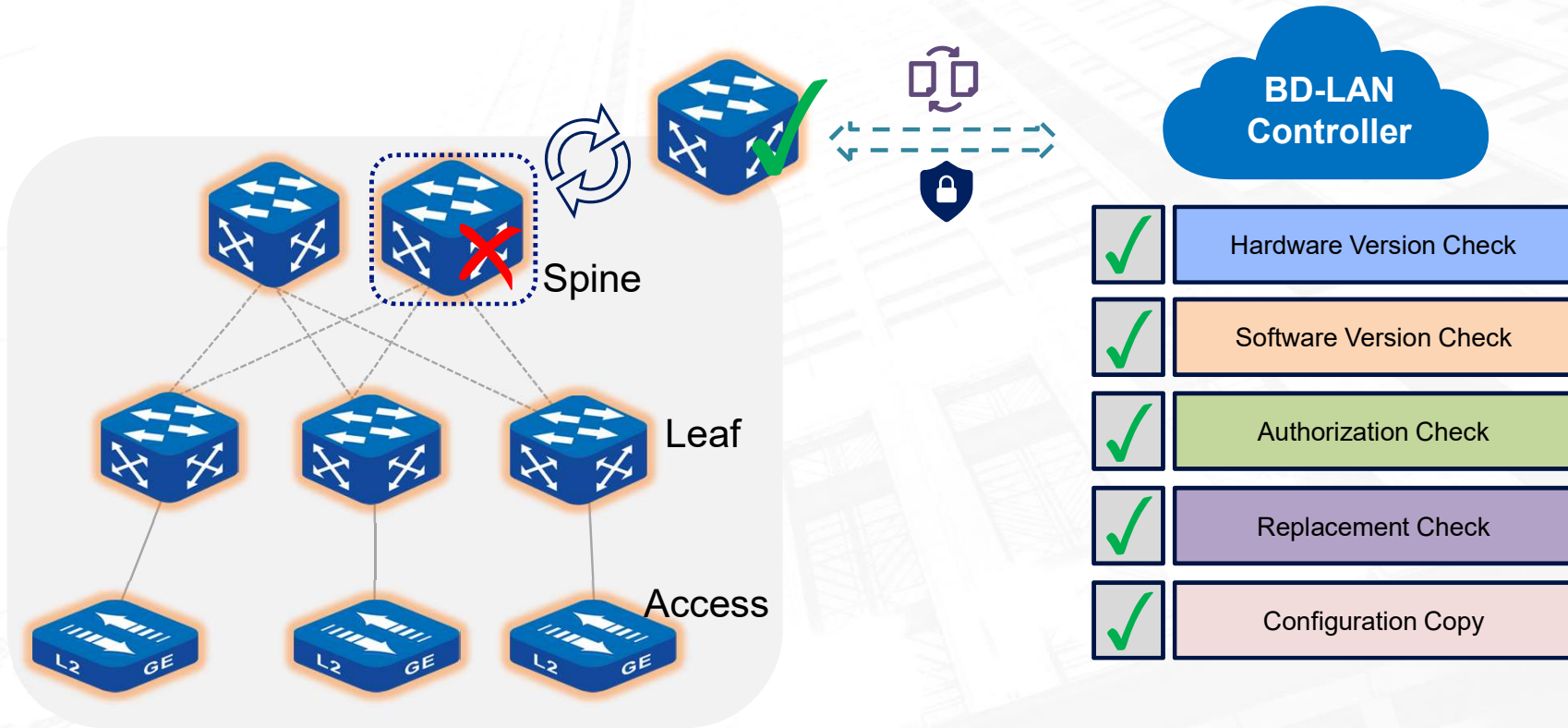
## 3 Auto Deployed

Southbound (NETCONF)

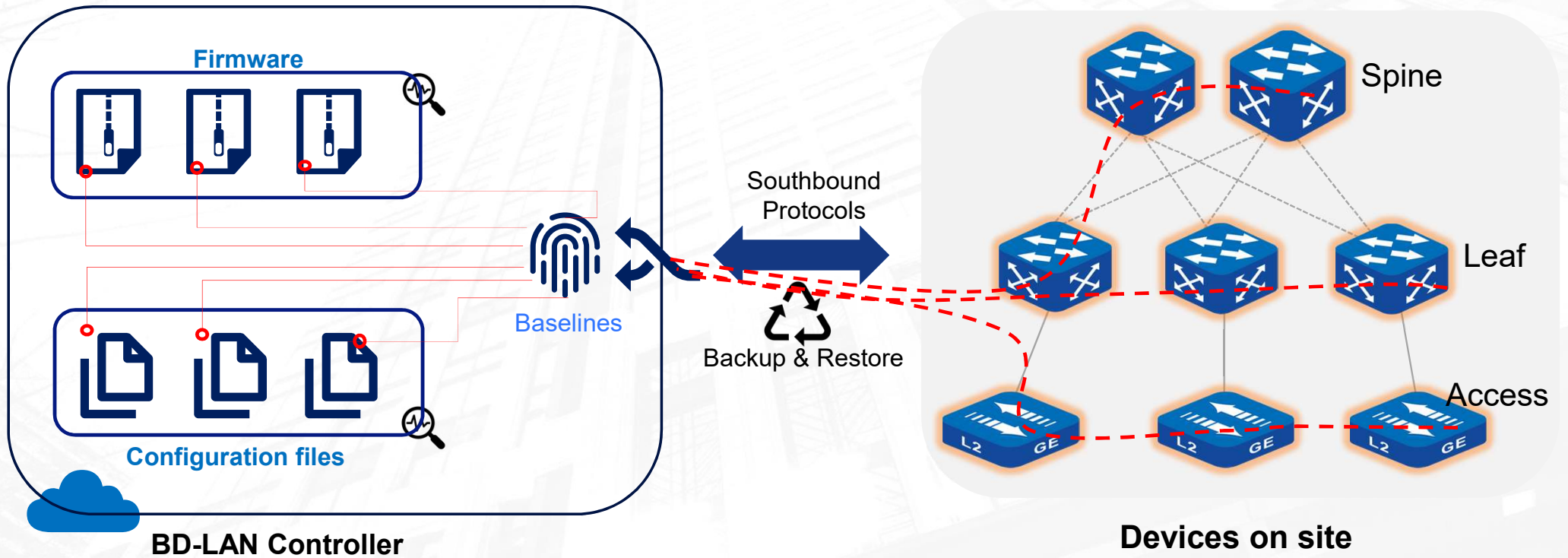


Devices on Sites

# AUTOMATION: ONE-CLICK REPLACEMENT



# AUTOMATION: AUTO UPGRADE/CONFIGURATION BACKUP

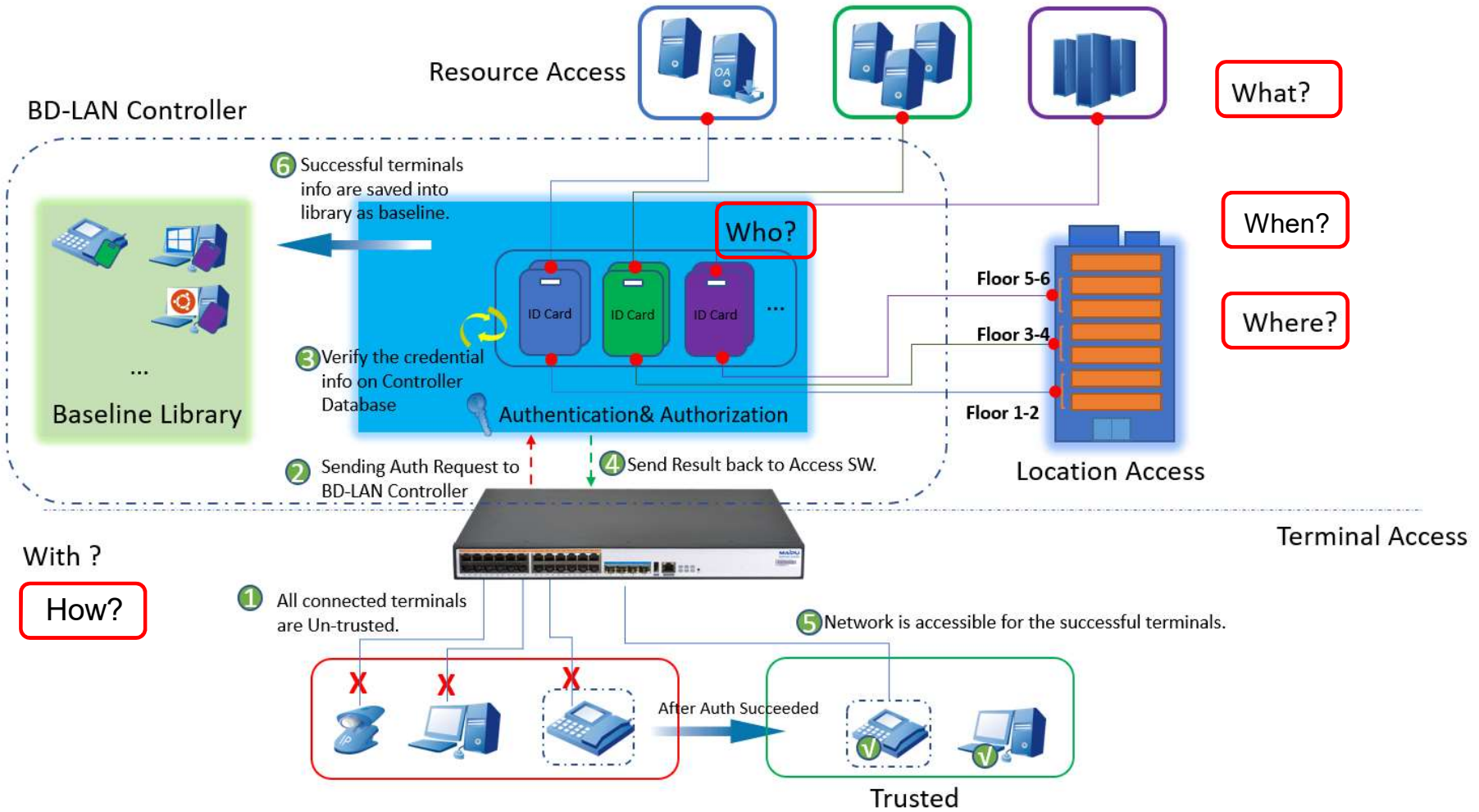




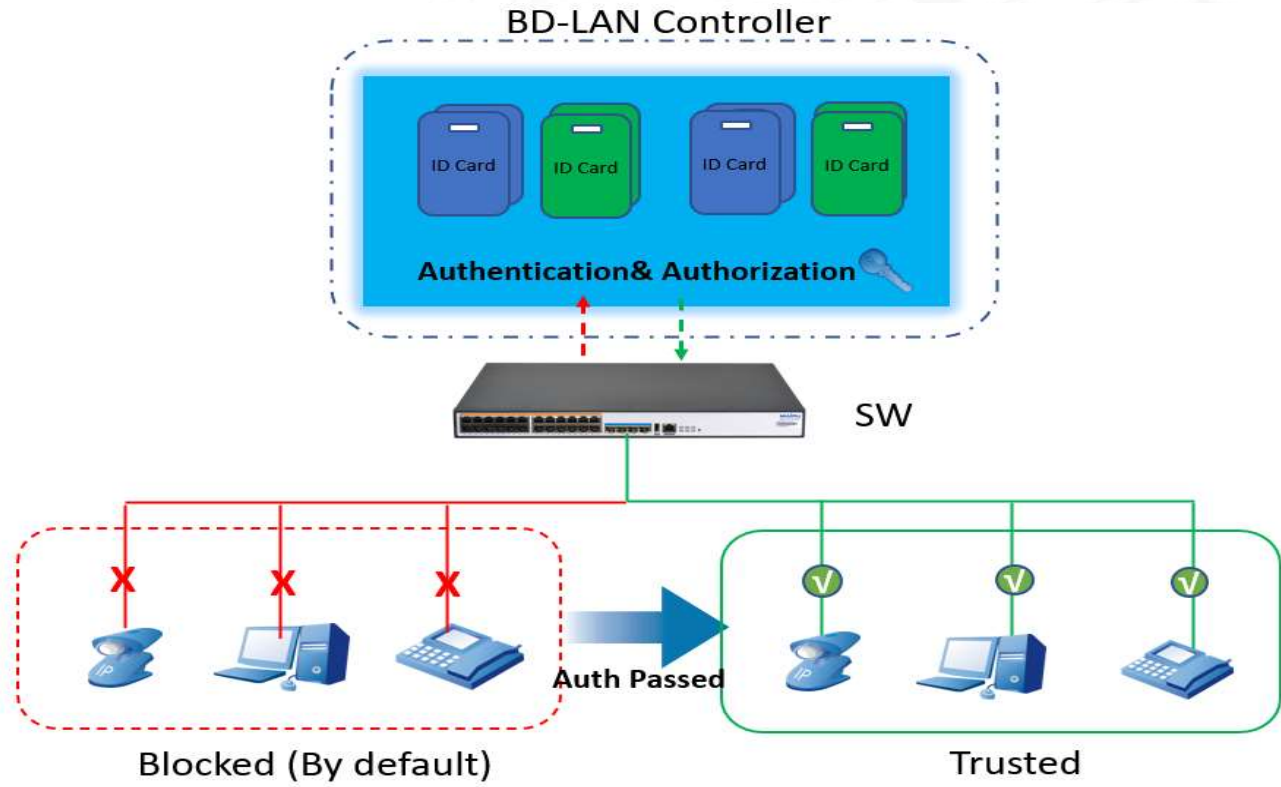
# ○ Network Security (Zero Trust Access)



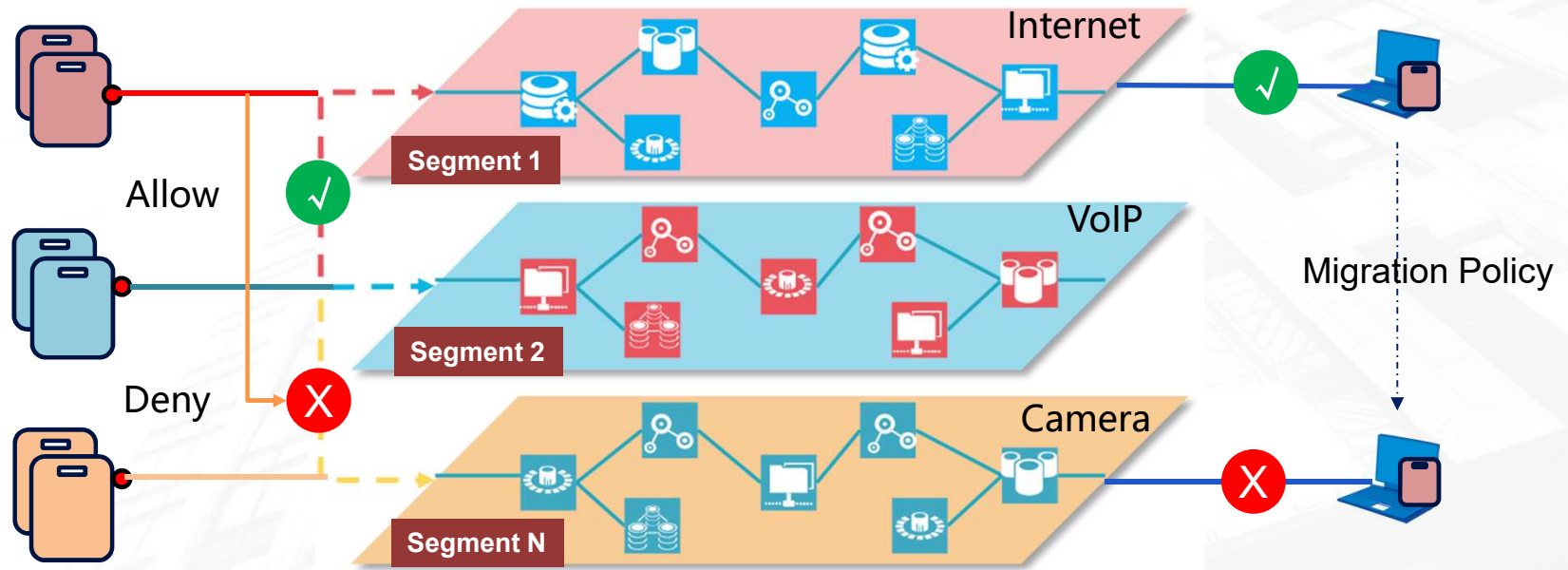
# NETWORK SECURITY: ZERO TRUST NETWORK



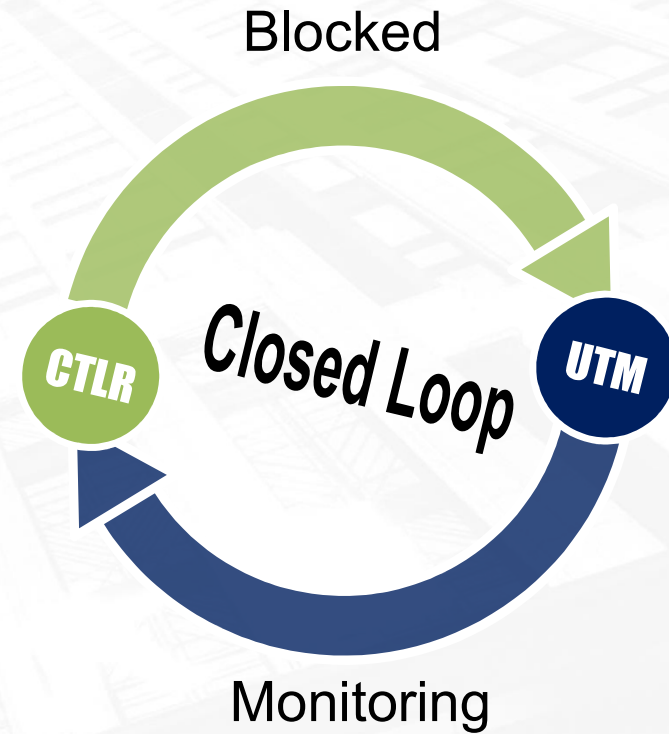
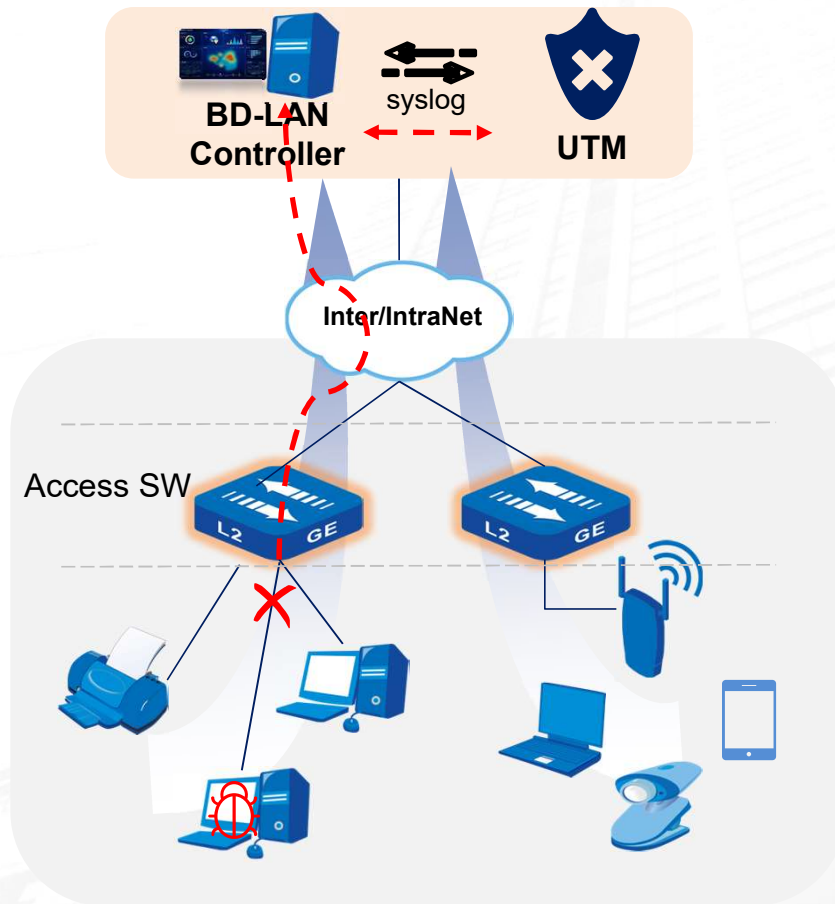
# NETWORK SECURITY: ZERO TRUST NETWORK



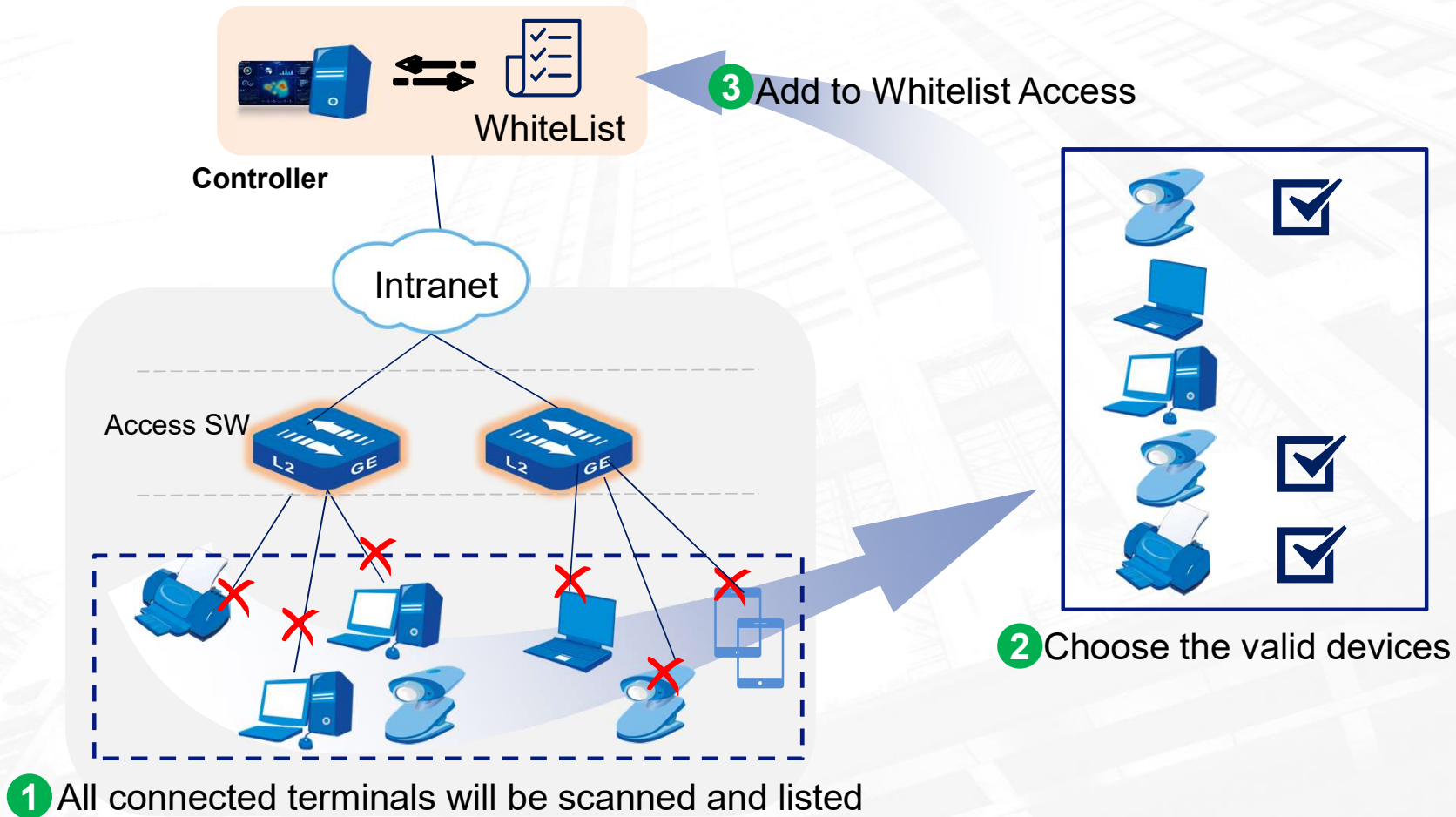
# NETWORK SECURITY: SEGMENT NETWORKS



# NETWORK SECURITY: CONTINUOUS MONITOR & AUTO DEFENSE



# NETWORK SECURITY: FAST WHITE-LIST ACCESS








# ○ Network Insights

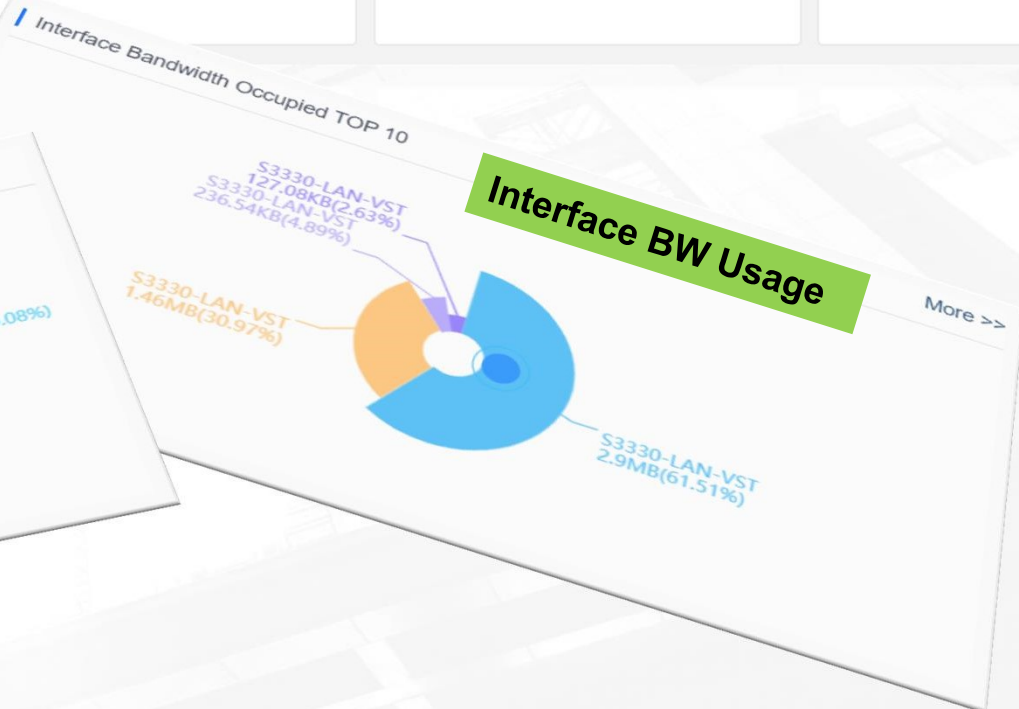
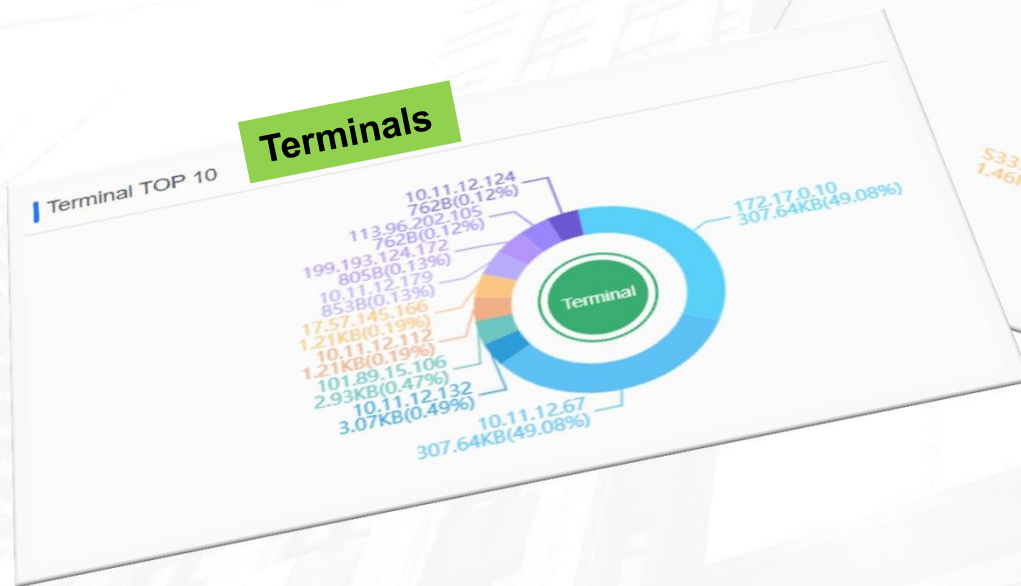
# NETWORK INSIGHTS: FULL-DIMENSION REPORTS

Dashboard

**Dashboard**

Time Range: Last Hour | Query

 Applications 13	 Terminals 90	 Devices 1	 Interfaces 4	 Flow Alarm 0
---	---	---	---	---





# NETWORK INSIGHTS: SMART MANAGEMENT

## IP Management



Network Segment <sup>?</sup>  
45



Total Quantity Of IP  
6856



Occupied IP  
0



Utilization Rate  
0%

Batch Modify

Network Segment/description

Query

<input type="checkbox"/>	Network Segment	Total Quantity Of IP	Occupied IP	Illegal IP	Auto Assign IP	Under Control	Utilization Rate	Description	Operation
<input type="checkbox"/>	10.0.0.0/24	256	0	0	No	Yes	0%		
<input type="checkbox"/>	10.1.1.0/24	256	0	0	No	Yes	0%		

## Assets Management



Total Assets  
22



Online Assets  
7



Offline Assets  
15



Stock Quantity  
0

Add

Import

Export

Custom Properties

Terminal MAC Merging

Cancel Terminal MAC Merging

Asset Type All

Status All

Name/IP/MAC/User/Asset Number

Query

<input type="checkbox"/>	MAC	IP	Asset Number	Manufacturer	Type	Model	Name	User	Location	Access Device	Access IP	Access Port	Status
--------------------------	-----	----	--------------	--------------	------	-------	------	------	----------	---------------	-----------	-------------	--------





# COMPARISON: BD-LAN VS. CISCO DNA

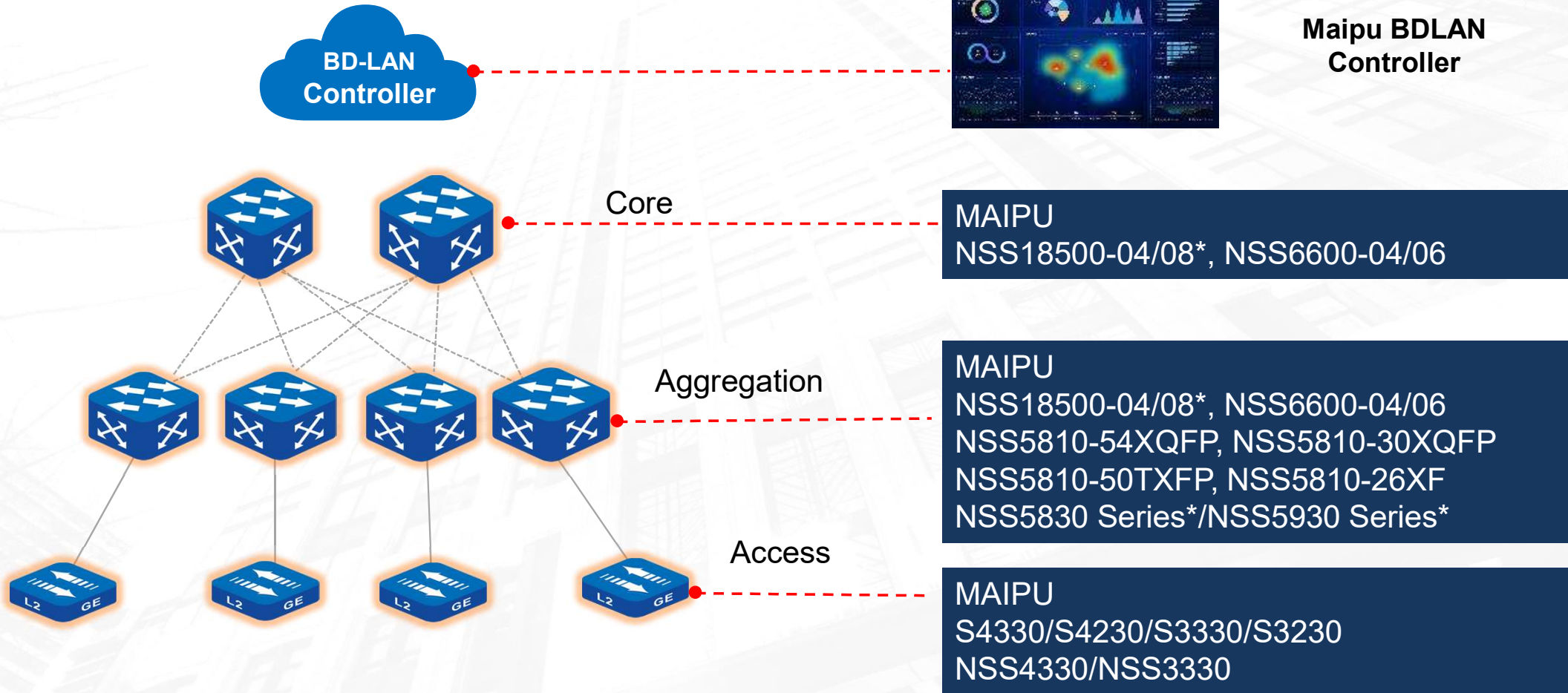
Features	Maipu BD-LAN*	Cisco DNA
ZTP	✓	✓
Network Design	✓	✓
Device Provisioning	✓	✓
Centralized management	✓	✓
Auto Config file Installation	✓	✓
Auto Firmware Upgrade	✓	✓
End-to-End Segmentation	✓	✓
Terminal Security	✓	✓
Visibility	✓	✓
NetFlow Monitoring	✓	✓

\*Maipu BD-LAN solution only requires software license on the controller side;

## 02 | MAIPU BD-LAN PRODUCTS PACKAGES



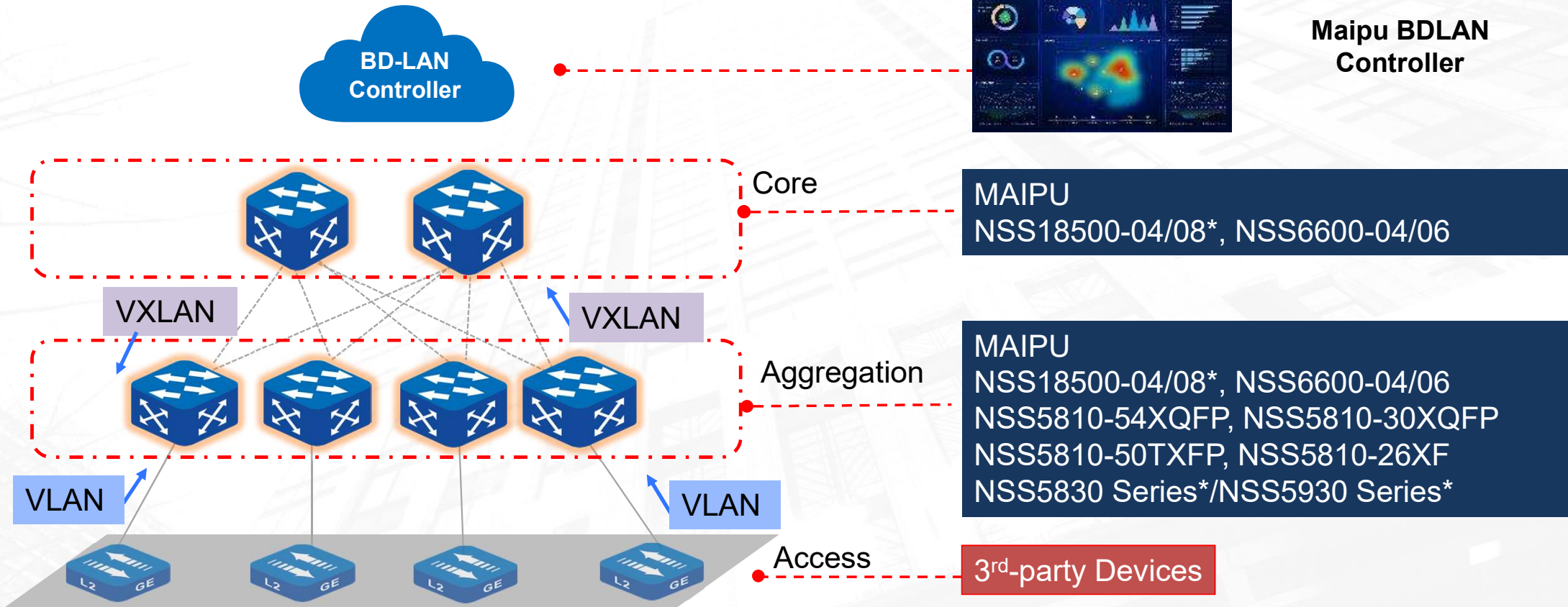
# MAIPU 3-TIER NETWORK STRUCTURE



\* The related models will be supported soon



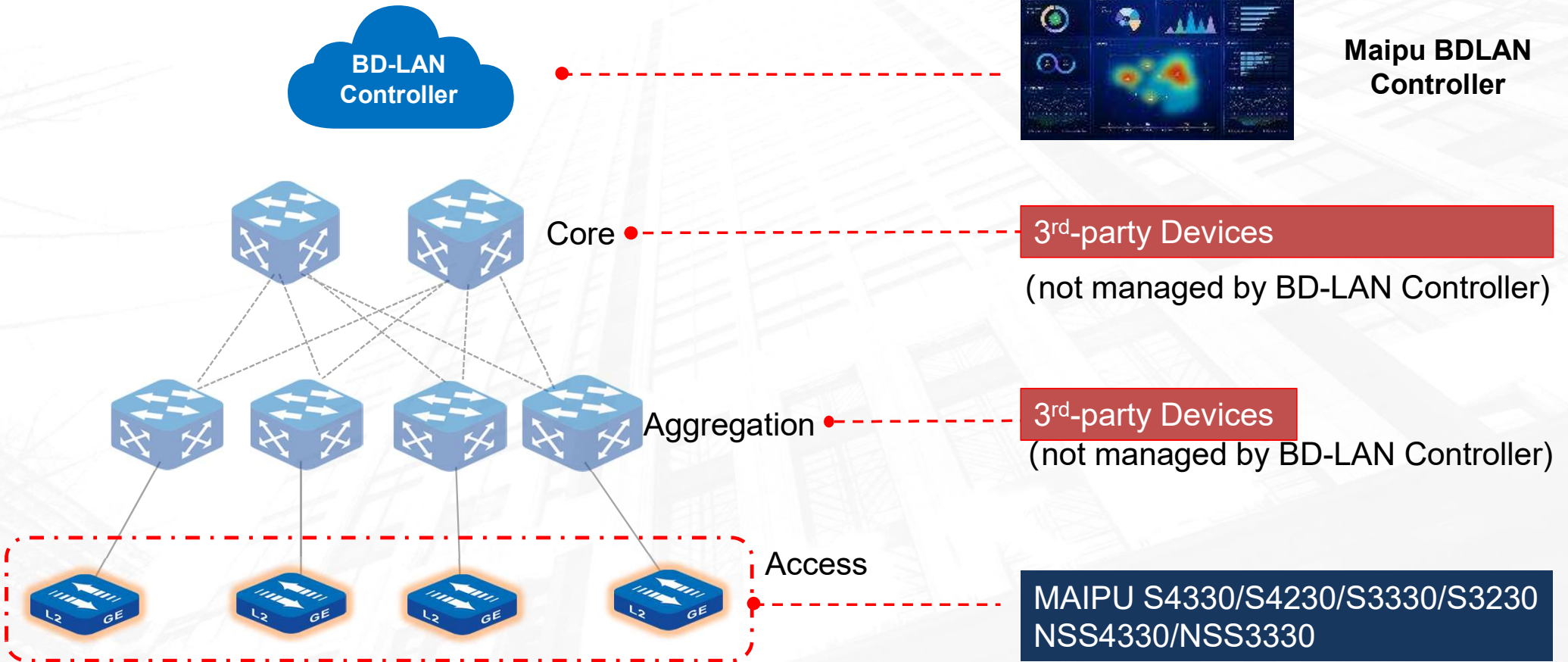
# MAIPU CORE & AGGR + 3<sup>RD</sup>-PARTY ACCESS



\* The related models will be supported soon



# MAIPU CONTROLLER & ACCESS SW + 3<sup>RD</sup>-PARTY

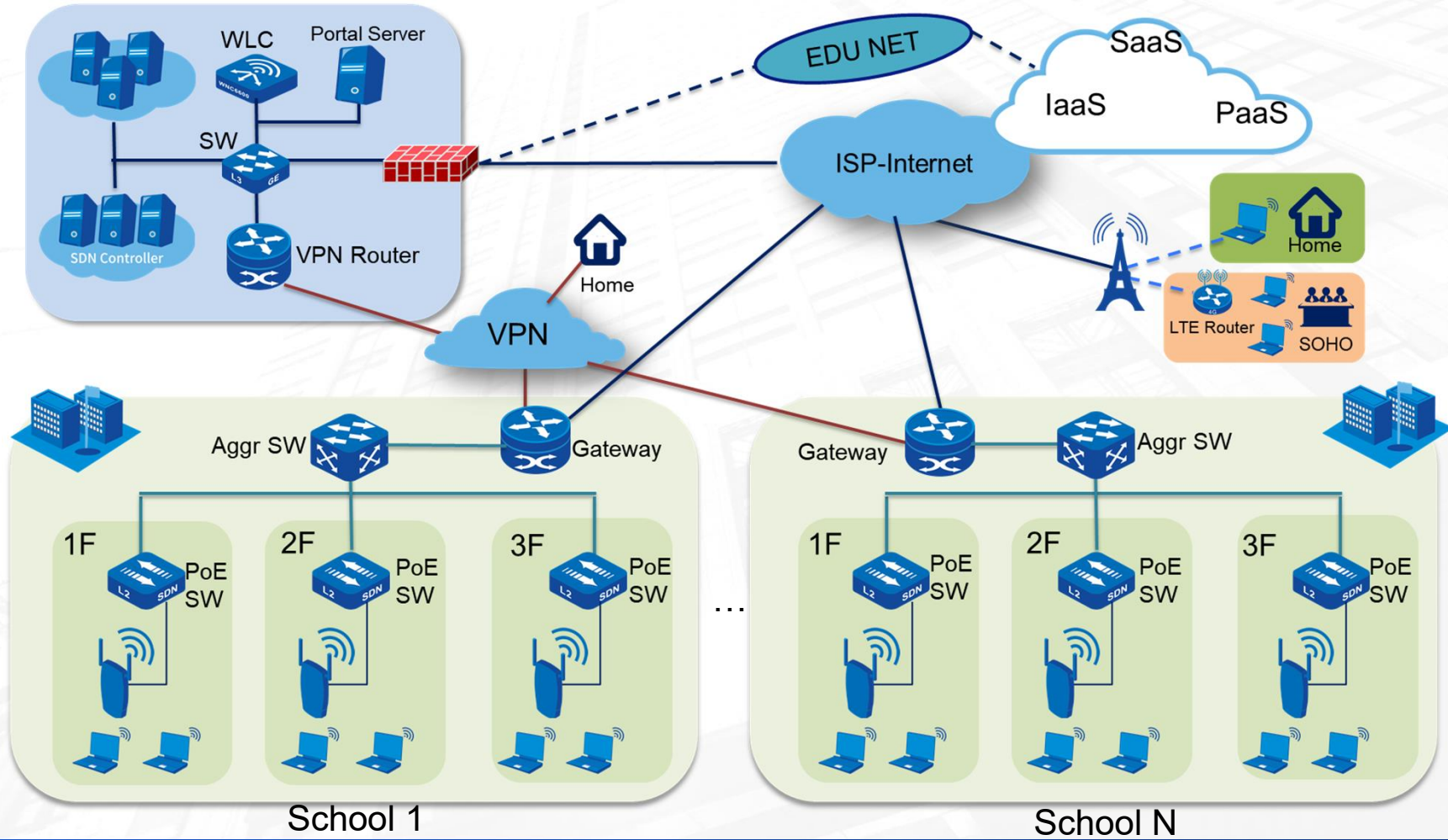


# 03 | MAIPU BD-LAN TYPICAL SCENARIOS ANALYSIS





# SCHOOL NETWORK



## Challenges

- **High OPEX** for Installation
- Long-lasting Deployment Period
- Difficult for **Terminal Monitor** and Management
- **Troubleshooting** Difficulties

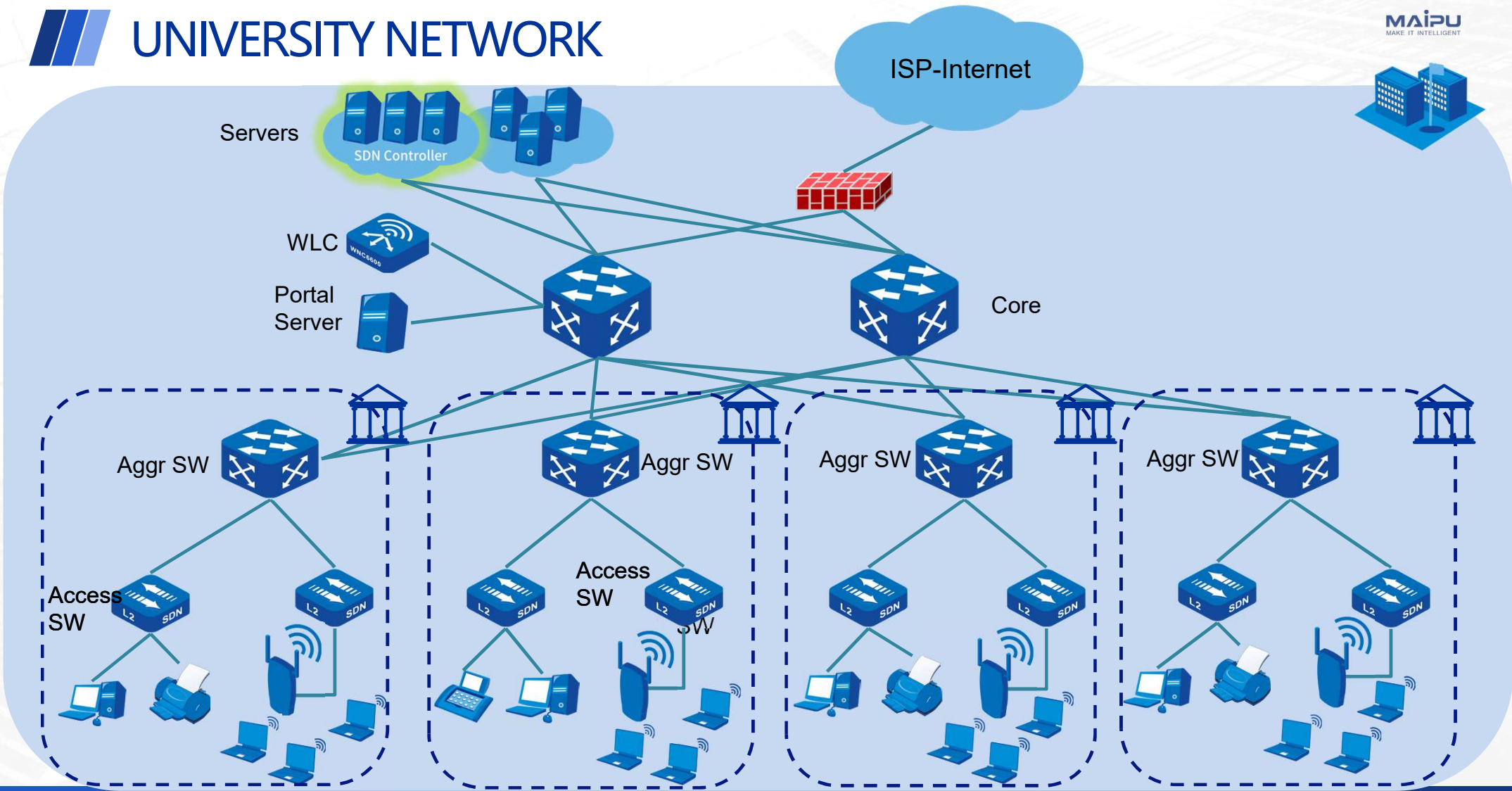


## Solution with BD-LAN

- **ZTP** for any one to start installation
  - Save OPEX
  - Fast deployment
- **Zero-Trust Access**
  - Auto Segment Networks for Terminals
  - No Access until Authenticated
- Monitor any network changes including network devices and terminals

# UNIVERSITY NETWORK

MAIPU  
MAKE IT INTELLIGENT



MAIPU, MAKE IT INTELLIGENT

## Challenges

- Users' privilege should **roam easily** wherever they are connected to
- **Huge Mount of Terminals** need to be managed everywhere
- **Network Security** is always a headache for diverse types of terminals
- Hard for **Issue Tracing** and Troubleshooting

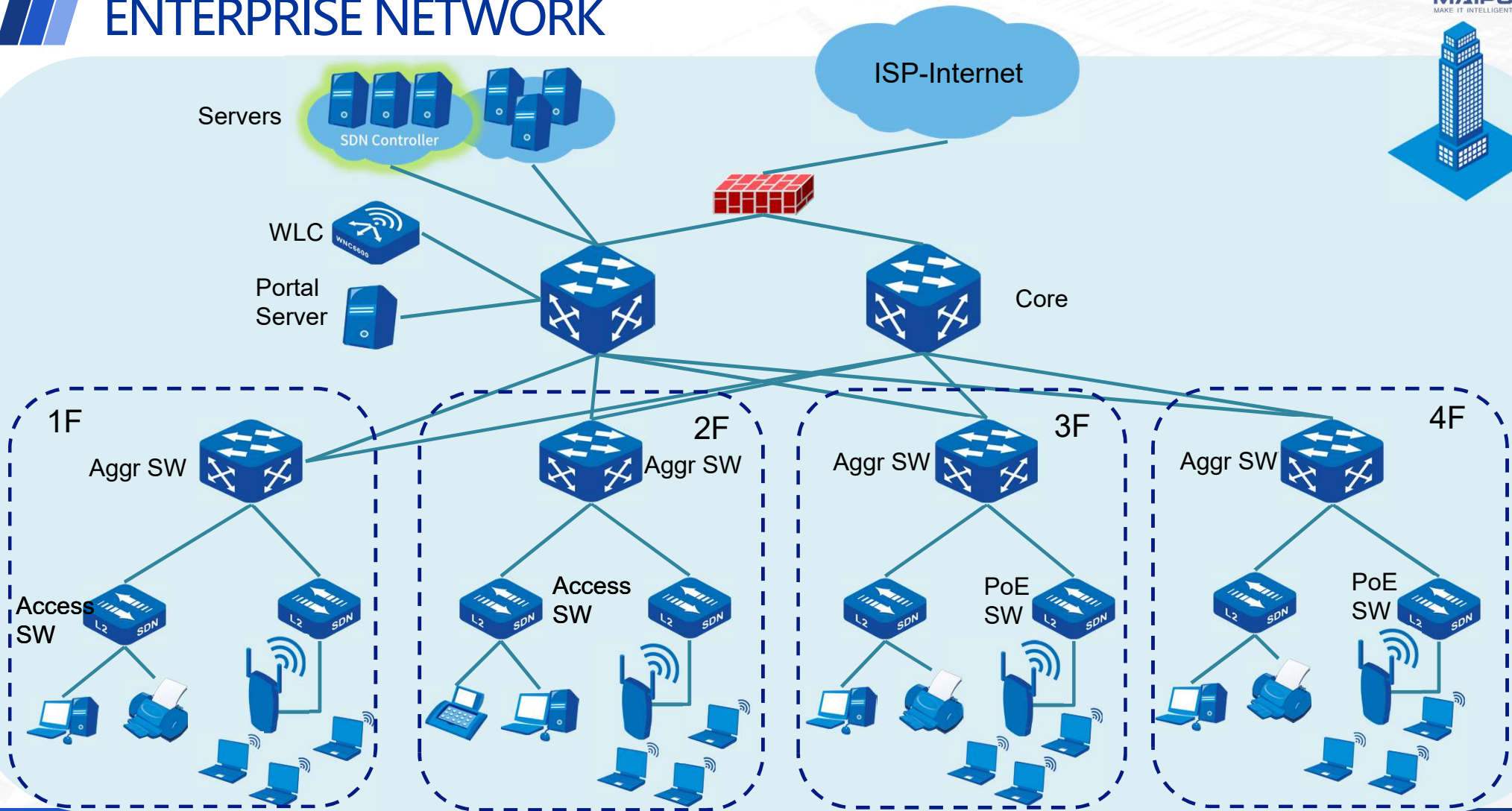


## Solution with BD-LAN

- Flexible **Zero-Trust Auth** to guarantee privileged access anywhere at any time
- **Continuous Security Monitoring** and **auto-block** to those mal-behaved terminals
- Detailed Logs for issue tracing even after long time

# ENTERPRISE NETWORK

MAIPU  
MAKE IT INTELLIGENT



MAIPU, MAKE IT INTELLIGENT

## Challenges

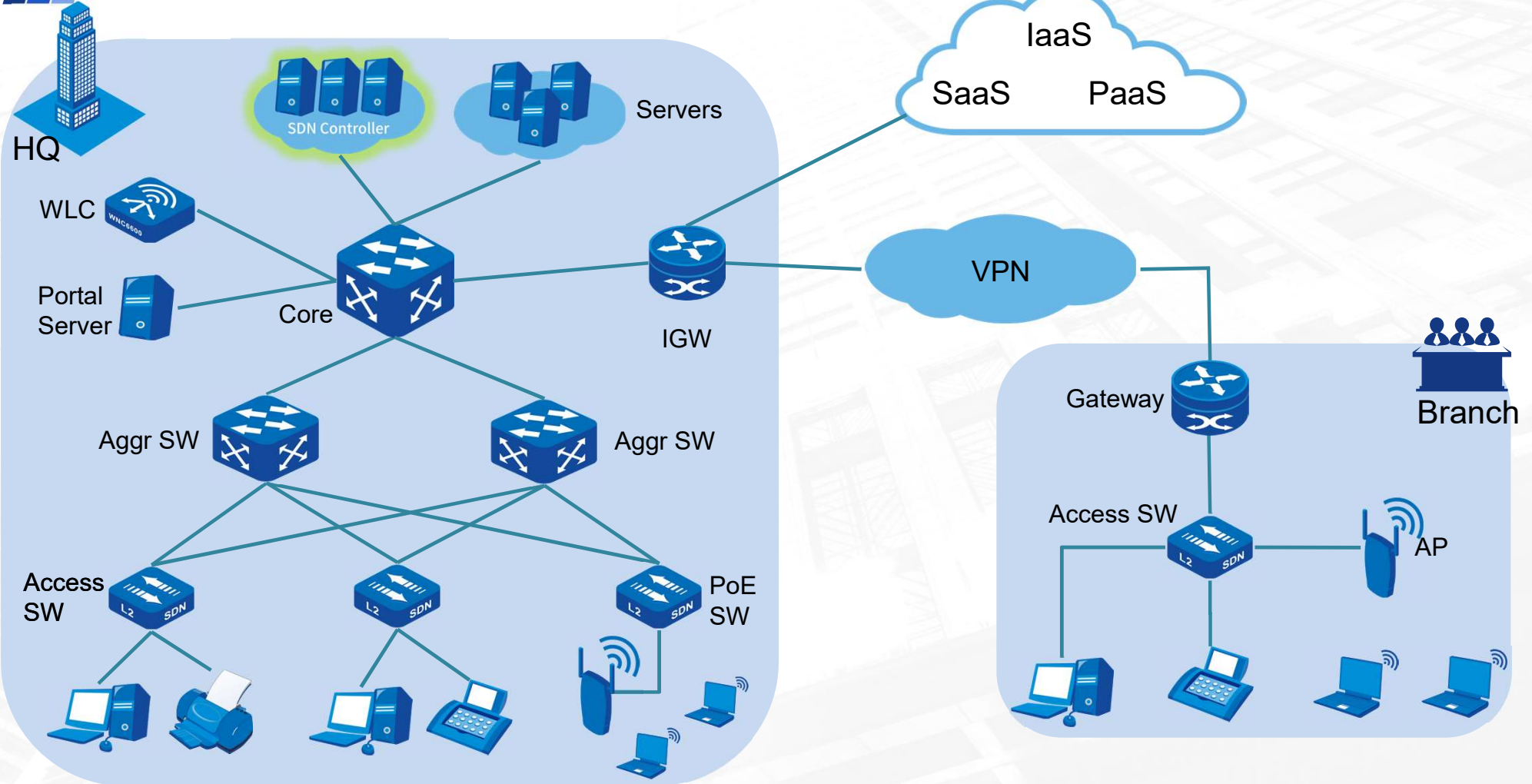
- Must wait for **long time** before service can be online
- Employees' **migration control** is always a headache
- **Weak defense** for Enterprise network when attacked internally
- **High OPEX** for maintenance



## Solution with BD-LAN

- **Auto Service Provisioning** for fast service online
- **Close-loop security** monitoring and auto-block
- **One-click replacement** and auto firmware/configs management

# BANK NETWORK



## Challenges

- Network **Security** is always the top concern
- Multiple services influence each other when running on the same network
- Unauthorized **terminal mobility** is hard to be recognized or prohibited
- **Fast Recovery** time is essential for bank business



## Solution with BD-LAN

- **Continuously network monitoring** and auto-blocking for mis-behaved terminals
- Automatically segment service network with **Zero-Trust Segmenting**
- **Zero-Trust Auth** prevents the devices' unauthorized mobility and gives warning
- Rich Dashboard modules for quick issue recognition at early stage and fast troubleshooting with Detailed logs



**MAIPU**  
MAKE IT INTELLIGENT

# THANK YOU!

---

MAIPU, MAKE IT INTELLIGENT

迈普大厦

E-mail: [overseas@maipu.com](mailto:overseas@maipu.com) | Web: [www.maipu.com](http://www.maipu.com) | Tel: +86-28-65544850



MAIPU, MAKE IT INTELLIGENT