

Product Roadmap

2022

H2



Product Portfolios



WiFi & Bluetooth Adapter



Wired NIC



Network Switch



PoE Accessory



AIOT



SMB WiFi AP

| MP Model | 2022Q3 | 2022Q4 | 2023Q1 |
|----------|--------|--------|--------|
|----------|--------|--------|--------|

EW-7611ULB V2

- 802.11 b/g/n
- N150
- Bluetooth 4.2



Bluetooth
WIFI

EW-7811ULC

- WiFi 11ac, AC600
- RTL8811CU



MP: SEP 2022



EW-7822UMX

- AX1800 2T2R
- RTL8832BU



WIFI

IEW-7811UTC

- WiFi 11ac, AC600
- Industrial usage
- Working Temp -20 ~ 75° C
- RTL8811CU



WIFI

PR: SEP., 2022
MP: NOV. 2022

EW-7822ULX

WiFi 11AX1800

- 2T2R
- WPA3 with 802.1x
- RTL8832BU

PR: AUG., 2022
MP: FEB., 2023

AX 1800

MP
New Project
Planning

AX 1800

EDIMAX Wired Network Adapter

MP Model

2022Q3

2022Q4

2023Q1

MP

New Project

Planning



EU-4306C

- USB3.2 Type-C to 1 GbE Ethernet Adapter
- Support Win11/Nintendo Switch/Chromebook/MacOS 12.x

MP: SEP. 2022

**No driver
Installation
needed!**

EN-9322SFP+

10Gb SFP+ PCI-E NIC, with Intel Chip, Dual SFP+ Port, PCI Express X8, Support Windows Server /Linux/VMware

MP: FEB. 2023



EN-9320SFP+ V2

10Gb SFP+ PCI-E NIC, PCI Express X8, IEEE 802.1Q VLAN ID tagging and IEEE 802.1q QoS Jumbo Frame 16KB



EDIMAX MIT L2 Switches

MP Model

2022Q3

2022Q4

2023Q1



MP: AUG., 2022

GS-5654LX

- GbE Port * 48, & 10G SFP+ * 6

GS-5424PLX

- GbE Port * 24 & 10G SFP+ * 4

GS-5424LX

- GbE Port * 24, 10G SFP+ * 4

GS-5424PLC V2

- GbE Port * 24, Gigabit SFP/RJ45*4

GS-5424G

- GbE Port * 24, Gigabit SFP+ * 4

EDIMAX PoE Multi-Giga 10G/ 5G/2.5G Solution

MP Model

2022Q3

2022Q4

2023Q1

10GbE



10GbE



GS-5420PB

- 10GbE SFP+ Port *4 + 2.5GbE Port*16
- Rich L2 features including SNMP v3, ACL, IGMP, LLPD-MED,
- Leverage CAT5e to upgrade to 2.5G bps with 10Gbps uplinks
- Power Budget: 350W
- Jumbo frame: 16k

GS-5109PB

- 2.5GbE Port * 8, 10G SFP+ *1
- Leverage CAT5e to upgrade 2.5Gbps
- Web Smart management
- Power budget:160W

MP: MAR. 2023

MP

New Project

Planning

MP: DEC. 2022

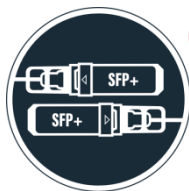
EDIMAX Multi-Giga 10G/ 5G/2.5G Solution

MP Model

2022Q3

2022Q4

2023Q1



MP: NOV. 2022



XGS-5012F

- 10GbE SFP+ * 12
- Rich web smart features including SNMP , ACL, IGMP, LACP
- Backplane:240Gbps
- Jumbo frame: 16k



XGS-5008 V2

- 10GbE Port *8
- Rich web smart features including SNMP v3, ACL, IGMP, LACP
- Backplane:160Gbps
- Jumbo frame: 16k

MP: FEB. 2023



MP: DEC. 2022

GS-5109B

- 2.5GbE Port * 8, 10G SFP+ *1
- Leverage CAT5e to upgrade 2.5Gbps
- Web Smart management
- Backplane:60Gbps
- Jumbo frame: 12k

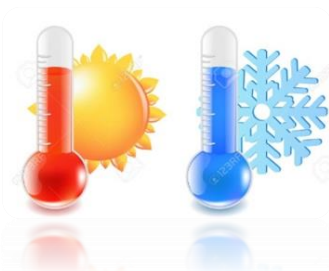
MP

New Project

Planning

EDIMAX IGS-Rack Mount

| MP Model | 2022Q3 | 2022Q4 | 2023Q1 |
|----------|--------|--------|--------|
|----------|--------|--------|--------|



Industrial Mode



MP: JAN.,2023

IGS-5654PL X

- 54 Gigabit ports with 10GbE uplink*6
- Intelligent Power management
- SNMP v3, ACL, IGMP
- PoE power budget: 800W, 400W
- Operation:-20~65°C



MP: DEC 2022

IGS-5428PL C

- 24 Gigabit PoE+ port
- Auto ONVIF VLAN
- Intelligent power budget: 500W, 300W
- SFP/ RJ45 uplink*4
- Power management
- Operation:-20~65°C



MP: NOV., 2022

IGS-5218PLC

- 16 Gigabit ports & 2 SFP/RJ45
- Auto ONVIF VLAN
- PoE power budget: 200W
- SFP /RJ45 uplinks *2
- Operation:-20~65°C

| |
|-------------|
| MP |
| New Project |
| Planning |

EDIMAX PoE Accessory

| MP Model | 2022Q3 | 2022Q4 | 2023Q1 |
|----------|--------|--------|--------|
|----------|--------|--------|--------|

GP-103IT

- 1GbE data rate
- 90W, Compliant with 802.bt
- Metal case



GP-201IT

- 2.5GbE data rate
- 30W, Compliant with 802.3at
- Metal case



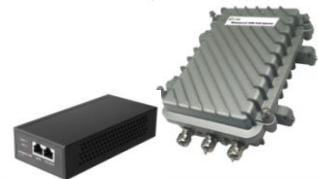
MP: OCT. 2022

GP-202IT

- 2.5GbE data rate
- 90W, Compliant with 802.3bt Type 4
- Metal case



MP: OCT. 2022



IGS-1005PI

- Extend 90W 802.3bt injector (GP-202IT) to 5* Gigabit ports Industrial Switch, Power budget: 75W
- Long range: 300Meters
- Operation:-20~70°C

MP: MAR. 2023

EDIMAX Industrial Switch(DIN Rail)



| 2022MP | 2022Q3 | 2022Q4 | 2023Q1 |
|--------|--------|--------|--------|
|--------|--------|--------|--------|

IGS-1105P

- 4*GbE ports + 1 SFP uplink
- 4 -Port PoE+, PWR budget:120W
- Power Redundancy
- Operation:-20~70 °C
- 6kV Surge protection



IGS-1210P

- 8 *GbE ports + 2 SFP
- 8- Port PoE+,PWR Budget:240W
- Power Redundancy
- 6kV Surge protection
- Operation:-20~70°C



DP- series

- DIN rail Power -24V/36W
- -54V/150W
- 6kV Surge protection

IGS-5210P

- 8 *GbE ports + 2 SFP
- Full-feature L2
- 8- Port PoE+,PWR Budget:240W
- IEEE 1588v2 PTP
- Power Redundancy
- 6kV Surge protection
- Operation:-40~75C



MP: JAN., 2023

IGS-1005

- 5*GbE ports
- Power Redundancy
- 6kV Surge protection
- Operation : -20~70 °C



DP- series

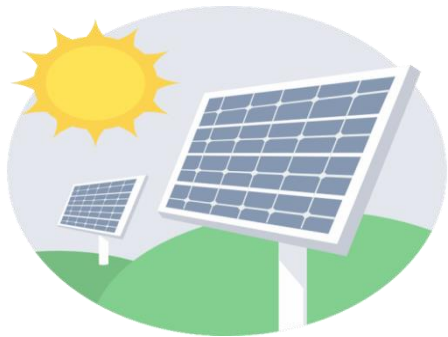
- DIN rail Power -52V/240W
- 6kV Surge protection
- UL/CE/FCC

MP: OCT., 2022

MP
New Project
Planning

EDIMAX Solar PoE Switch

| MP Model | 2022Q3 | 2022Q4 | 2023Q1 |
|----------|--------|--------|--------|
|----------|--------|--------|--------|



IGS-5210PS (Solar Managed Switch)

- 8 *GbE PoE ports + 2 SFP uplinks
- Power Redundancy
- Compliant with 802.3BT
- Power Budget 240W
- 6kV Surge protection
- MPPT mode
- Operation:-20~70°C

MP: DEC 2022

IGS-1105PS

- 5*GbE ports + 1 SFP uplinks
- Compliant with 802.3BT
- Power Redundancy
- PWR budget 120W
- 6kV Surge protection
- MPPT mode
- Operation:-20~70 °C

MP: DEC 2022

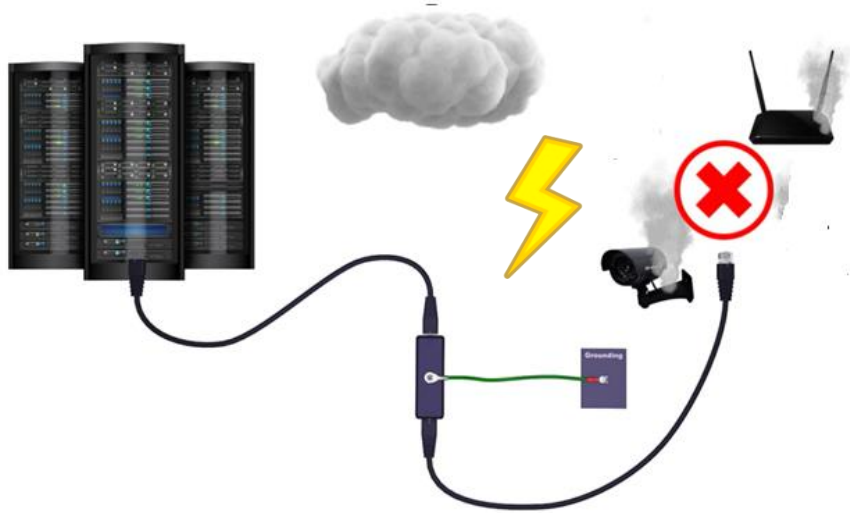
MP

New Project

Planning

EDIMAX PoE Accessory

| | | | |
|----|--------|--------|--------|
| MP | 2022Q3 | 2022Q4 | 2023Q1 |
|----|--------|--------|--------|



GP-1016DR

- 1U Rack Mount/DIN-Rail mount /Wall mount kits
- Stand alone or Up to 16 Ethernet Surge Protector s– Gigabit PoE
- RJ45 Lightning Suppressor with Gas Discharge Tube(GDT)
- Line to Ground
- Jumbo frames 10KB
- Rack Mount kit included

| |
|-------------|
| MP |
| New Project |
| Planning |

MP: DEC. 2022

EDIMAX Network Switch(Essential)

| | | | |
|----|--------|--------|--------|
| MP | 2022Q3 | 2022Q4 | 2023Q1 |
|----|--------|--------|--------|



- GS-5008E**
- 8 -Port PoE Gigabit Web smart Switch
(external power supply)
 - VLAN, IEEE802.1p QoS
 - Jumbo frames 10KB
 - IGMP, LACP , Port Mirroring



- GS-5210PL G**
- 8 -Port PoE Gigabit Switch
+1 RJ45 port & 1 SFP port
 - IEEE802.3at, 30W per port
 - Power Budget:100W
 - VLAN, IEEE802.1p QoS
 - Jumbo frames 10KB
 - Rack Mount kit included



- GS-1024**
- 24 Gigabit ports
 - Wall-mount /Rack mount
 - Jumbo frames 10KB
 - QoS

MP: NOV. 2022

| |
|-------------|
| MP |
| New Project |
| Planning |

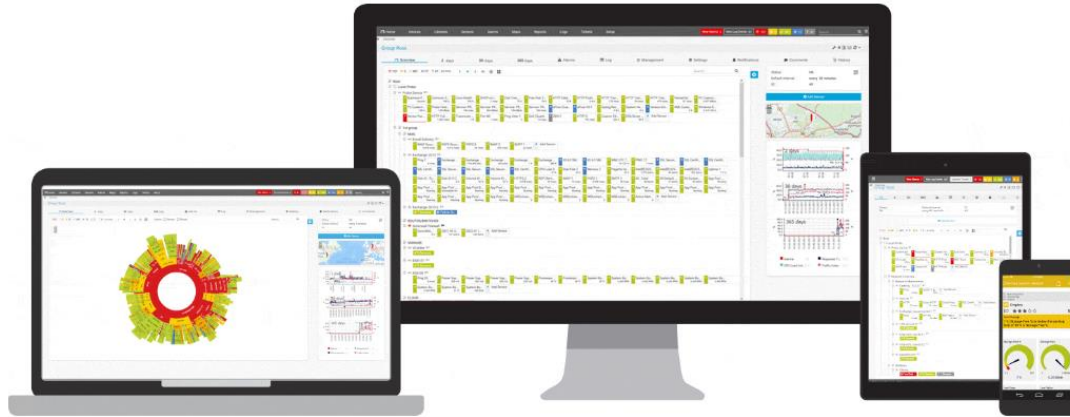
EDIMAX Switch Network Management System

MP Model

2022Q3

2022Q4

2023Q1



NMS-100

- Web UI including Dashboards, node status, resource graph viewer, geographical and logical topology maps, heat maps, trend analysis
- Auto Network Topology
- Network traffic flow analysis
- N to N analysis
- Event handling
- System Log management
- LLDP-MED management
- RADIUS Server
- DHCP snooping



MP

New Project

Planning

MP: FEB. 2023

The logo for EDIMAX, featuring the Greek letter sigma (Σ) followed by the letters EDIMAX in a bold, sans-serif font. A small red dot is positioned above the letter 'I'.

Celebrating 36 years of dedication in networking

thank you