

**EDIMAX Pro**

# Business Networking Product Guide

**2023**

Elevating Businesses with  
Enhanced Connectivity



Downloadable  
Marketing Resources

# One-Click VLAN Setting & ONVIF Auto-Enrollment



## Tailor-made Features for Surveillance and SMB

Surveillance Switches are compatible with working ONVIF compliant Profiles G/S/A/C/T/M devices to provide fast and easy system settings, device discovery, and user authentication. Easily setup and configure surveillance networks with ease of mind.



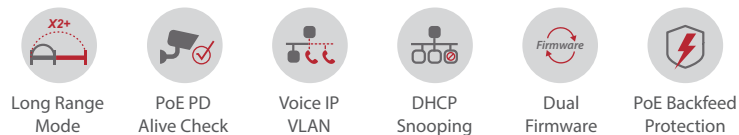
PoE Web Smart Switch				
Model No.	GS-5424PLX V2	GS-5424PLC V3	GS-5216PLC	GS-5210PL
Gigabit Ethernet				
Total Port Count	28-Port	28-Port	18-Port	12-Port
Description	Surveillance VLAN 28-Port Gigabit PoE+ Long Range Web Smart Switch with 4 10GbE SFP+ Ports	Surveillance VLAN 28-Port Gigabit PoE+ Long Range Web Smart Switch with 4 Gigabit RJ45/SFP Combo Ports	Surveillance VLAN 18-Port Gigabit PoE+ Long Range Web Smart Switch with 2 Gigabit RJ45/SFP Combo Ports	Surveillance VLAN 12-Port Gigabit PoE+ Long Range Web Smart Switch with 2 Gigabit RJ45 Ports and 2 SFP Ports
Port/Module Slots				
GbE / FE	24 x GbE	24 x GbE	16 x GbE	10 x GbE
SFP/SFP+ Slot	4 x 10GbE SFP+	-	-	2 x SFP
1000Base Combo RJ-45/SFP	-	4	2	-
PoE Port	24	24	16	8
Console Port	v	v	-	-
PoE Power Management				
IEEE 802.3af/at	v	v	v	v
Power Budget Management UI	v	v	v	v
PD Alive Check	v	v	v	v
Overloading Protecting	v	v	v	v
Power Backfeed Protection	v	v	v	v
Long Range PoE 200M*	v	v	v	v
Total PoE Power Budget	400W	400W	280W	110W
Performance				
Packet Buffer, bit	12M	4.1M	4.1M	4.1M
MAC Address	16K	8K	8K	8K
Jumbo Frame, Bytes	12K	9K	9K	9K
Backplane bandwidth	128Gbps	56Gbps	36Gbps	24Gbps
Forwarding Rate	95.2Mpps	41.6Mpps	26.7Mpps	17.8Mpps
Management				
Web-Based	v	v	v	v
Features				
ONVIF Surveillance VLAN	v	v	v	v
IEEE 802.1q VLAN	v	v	v	v
IEEE 802.1d/w STP/RSTP	v	v	v	v
SNMP v1/v2/v3	v	v	v	v
Trunking Group	8	8	8	8
LACP	v	v	v	v
QoS/Priority Queues	v	v	v	v
IGMP Snooping	v	v	v	v
Storm Control	v	v	v	v
Port Mirroring	v	v	v	v
Loopback Detection	v	v	v	v
Access Control List (ACL)	v	v	v	v
Dual Firmware	v	v	v	v
Voice VLAN	v	v	v	v
DHCP Snooping	v	v	v	v
Long Range PoE 200M*	v	v	v	v
Others	Power Saving with Intelligent Thermal Control	Power Saving with Intelligent Thermal Control	4-digit LED display for PoE power status	4-digit LED display for PoE power status
Fan Type	2 x Fans with Intelligent Thermal Controller	2 x Fans with Intelligent Thermal Controller	1 x Fan with hot-swappable fan tray	Fanless
Power Type	Internal Power	Internal Power	Internal Power	Internal Power
Physical				
Dimension (LxWxH)	441x270x44mm	441x270x44mm	441x196x44mm	330x230x44mm
Mounting Type	Rack Mount	Rack Mount	Rack Mount	Rack Mount



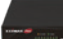


\* Guaranteed PoE long distance to 200 meters.

# Simplify the Management. Optimize the Connection

Functionality, Security and Manageability at a Low Cost with Great Value

The EDIMAX Pro Web Smart Managed Switches goes beyond plug-and-play connectivity, offering convenient of full management capabilities and security features that effortlessly fits into sophisticated IT systems.



PoE Web Smart Switch					
Model No.	GS-5654PLX V2	GS-5208PLG V2	GS-5210PLG	GS-3008P	GS-3005P
Gigabit Ethernet					
Total Port Count	54-Port	10-Port	10-Port	8-Port	5-Port
Description	Long Range 54-Port Gigabit PoE+ Web Smart Switch with 6 SFP + 10 Gigabit Ports	Long Range 8-Port Gigabit PoE+ Web Smart Switch with 2 SFP Ports	Long Range 10-Port Gigabit PoE+ Web Smart Switch with 1 SFP Ports	Long Range 8-Port Gigabit PoE+ Web Smart Switch with 4 PoE+ Ports	Long Range 5-Port Gigabit PoE+ Web Smart Switch with 4 PoE+ Ports
Port/Module Slots					
GbE / FE	48 x GbE	8 x GbE	9 x GbE	8 x GbE	5 x GbE
SFP/SFP+ Slot	6 x 10GbE SFP+	2 x SFP	1 x SFP	-	-
1000Base Combo RJ-45/SFP	-	-	-	-	-
PoE Port	48	8	8	4	4
Console Port	v	-	-	-	-
PoE Power Management					
IEEE 802.3af/at	v	v	v	v	v
Power Budget Management UI	v	v	v	v	v
PD Alive Check	v	-	-	-	-
Overloading Protecting	v	v	v	v	v
Power Backfeed Protection	v	v	v	v	v
Long Range PoE 200M*	v	v	v	v	v
Total PoE Power Budget	400W	85W	100W	60W	60W
Performance					
Packet Buffer, bit	16M	1.5M	1.5M	1.5M	1M
MAC Address	32K	4K	4K	4K	4K
Jumbo Frame, Bytes	12K	9.2K	9.2K	9K	9K
Backplane bandwidth	216Gbps	20Gbps	20Gbps	16Gbps	10Gbps
Forwarding Rate	160.7Mpps	14.8Mpps	14.8Mpps	11.9Mpps	7.4Mpps
Management					
Web-Based	v	v	v	v	v
Features					
IEEE 802.1q VLAN	v	v	v	v	v
IEEE 802.1d/w STP/RSTP	v	v	v	v	v
SNMP v1/v2/v3	v	v	v	v	v
Trunking Group	8	8	8	1	1
LACP	v	v	v	v	v
QoS/Priority Queues	v	v	v	v	v
IGMP Snooping	v	v	v	v	v
Storm Control	v	v	v	v	v
Port Mirroring	v	v	v	-	-
Loopback Detection	v	v	v	v	v
Access Control List (ACL)	v	-	-	-	-
Dual Firmware	v	-	-	-	-
Voice VLAN	v	-	-	-	-
DHCP Snooping	v	-	-	-	-
Long Range PoE 200M*	v	v	v	v	v
Fan Type	4 x Fans with Intelligent Thermal Controller	Fanless	Fanless	Fanless	Fanless
Power Type	Internal Power	Internal Power	Internal Power	External Power	External Power
Physical					
Dimension (LxWxH)	441x330x44mm	265x184x44mm	265x184x44mm	240x105x26mm	193x84x26mm
Mounting Type	Rack Mount	Rack Mount	Rack Mount	Wall Mount	Wall Mount

\* Guaranteed PoE long distance to 200 meters.

# Guaranteed PoE Long Distance to 200 Meters

## Long Range Flexible PoE Deployment, Exceptional for IP Surveillance Solution

The EDIMAX dedicated long range PoE switches supports PoE-enabled devices, saving more money by reducing power cable deployment costs, in addition with easy hardware DIP switches that can further setup port-based VLAN (port isolation) and QoS.



Guarantee PoE Distance 200M



Easy Hardware QoS



Innovative Port-Based VLAN



Flexible PoE Deployment



PoE Unmanaged Switch			
Model No.	GS-1008P V2 / GS-1008PL V2	ES-1008P V2	ES-5104PH V2
	Gigabit Ethernet	Fast Ethernet	
Total Port Count	8-Port	8-Port	5-Port
Description	8-Port Gigabit PoE+ Switch with DIP Switch	8-Port Fast Ethernet PoE+ Switch with DIP Switch	5-Port Fast Ethernet PoE+ Switch with 4 PoE+ Ports & DIP Switch
Port/Module Slots			
GbE / FE	8 x GbE	8 x FE	5 x FE
PoE Port	8	8	4
PoE Features			
PoE Port(IEEE802.11at/af)	v	v	v
PD Classification	v	v	v
Overloading Protecting	v	v	v
Long Range PoE Extend Mode	v (DIP Switch)	v (DIP Switch)	v (DIP Switch)
Total PoE Power Budget	130W / 70W	130W	60W
Performance			
Packet Buffer, bit	1.5M	448K	448K
MAC Address	4K	1K	1K
Jumbo Frame, Bytes	9K	-	-
Features			
IEEE 802.1q VLAN	v (DIP Switch)	v (DIP Switch)	v (DIP Switch)
IEEE 802.3az Energy Efficient Ethernet	v	v	v
QoS	v (DIP Switch)	v (DIP Switch)	v (DIP Switch)
Long Range PoE 200M*	v (DIP Switch)	v (DIP Switch)	v (DIP Switch)
Fan Type	Fanless	Fanless	Fanless
Power Type	Internal Power	Internal Power	External Power
Physical			
Dimension (LxWxH)	265x184x44mm	265x184x44mm	121x75x26mm
Mounting Type	Rack Mount	Rack Mount	Wall Mount

\* Guaranteed PoE long distance to 200 meters.

Web Smart Switch				
Model No.	XGS-5008	GS-5654LX / GS-5424 LX	GS-5424G	GS-5008E
	10 Gigabit	Gigabit Ethernet		
Total Port Count	8-Port	54-Port / 24-Port	28-Port	8-Port
Description	8-Port 10GbE Web Smart Switch	54-Port / 24-Port Gigabit Web Smart Switch with 6 / 4 10GbE SFP+ Ports	24-Port Gigabit Web Smart Switch with 4 SFP Ports	8-Port Gigabit Web Smart Switch
Port/Module Slots				
GbE / FE	8 x 10 GbE	48 / 24 x GbE	24 x GbE	8 x GbE
SFP/SFP+ Slot	-	6 / 4 x 10GbE SFP+	4 x SFP	-
Performance				
Packet Buffer, bit	16M	16M / 12M	4.1M	1.53M
MAC Address	16K	32K / 16K	8K	4K
Jumbo Frame, Bytes	9K	12K	9K	9K
Management				
Web-Based	v	v	v	v
Features				
IEEE 802.1q VLAN	v	v	v	v
6KV Surge Protection	-	v	v	-
Trunking Group	4	8	8	8
QoS	v	v	v	v
IGMP Snooping	v	v	v	v
Storm Control	v	v	v	v
Loopback Detection	v	v	v	v
Fan Type	1 x Fan with hot-swappable fan tray	3 x Fans with Intelligent Thermal Controller / Fanless	Fanless	Fanless
Power Type	External Power	Internal Power	Internal Power	External Power
Physical				
Dimension (LxWxH)	265x185x44mm	441x270x44mm / 441x198x44mm	440x220x44mm	155x85x26mm
Mounting Type	Rack Mount	Rack Mount	Rack Mount	Wall Mount

Unmanaged Switch				
Model No.	GS-1005BE	GS-1026 V3	GS-1024 / GS-1016 V2	GS-1008EV2 / GS-1005E
	2.5 Gigabit	Gigabit Ethernet		
Total Port Count	5-Port	26-Port	24-Port / 16-Port	8-Port / 5-Port
Description	5-Port 2.5GbE Switch	24-Port Gigabit Switch with 2 SFP Ports	24-port / 16-Port Gigabit Switch	8-Port / 5-Port Gigabit Switch
Port/Module Slots				
GbE / FE	5 x 2.5GbE	24 x GbE	24 / 16 x GbE	8 / 5 x GbE
SFP/SFP+ Slot	-	2 x SFP	-	-
Performance				
Packet Buffer, bit	12M	4.1M	4.1M	1.5M / 1M
MAC Address	16K	8K	8K	4K / 2K
Jumbo Frame, Bytes	12K	10K	10K	9K
Features				
IEEE 802.3az Energy Efficient Ethernet	v	v	v	v
Fan Type	Fanless	Fanless	Fanless	Fanless
Power Type	External Power	Internal Power	Internal Power	External Power
Physical				
Dimension (LxWxH)	160x110x26mm	441x131x44mm	268x160x42mm / 215x133x42mm	154x85x26mm / 121x75x26mm
Mounting Type	Wall Mount	Rack Mount	Rack Mount / Wall Mount	Wall Mount

Accessories			
Model No.	GP-103IT / GP-102IT	GP-101IT	
	PoE Injector		
Description	IEEE 802.3bt Gigabit PoE++ Injector, up to 90W/60W Metal Case, Wall-Mount	IEEE 802.3at Gigabit PoE+ Injector, up to 30W, Wall-Mount	
Port/Module Slots			
GbE / FE			
SFP/SFP+ Slot			
Performance			
Packet Buffer, bit			
MAC Address			
Jumbo Frame, Bytes			
Features			
IEEE 802.3az Energy Efficient Ethernet			
Fan Type			
Power Type			
Physical			
Dimension (LxWxH)			
Mounting Type			

Model No.	GP-101ET	GP-101ST	MG-10G / MG-1000 Series	EA1 Series
PoE Extender	PoE Splitter	SFP Transceiver	SFP+ DAC Cable	
IEEE 802.3at Gigabit PoE+ Extender	IEEE 802.3at Gigabit PoE+ Splitter	10GbE or 1GbE SFP+/SFP Modules	10GbE SFP+ Direct Attach Cable	

Model No.	EN-9320SFP+ V2	EN-9320TX-E V2	EN-9225TX-E
PCI-E Card			
10 Gigabit Ethernet SFP+ PCI Express Server Adapter	10 Gigabit Ethernet PCI Express Server Adapter	2.5 Gigabit Ethernet PCI Express Server Adapter	

# Robust Industrial Managed Switch

Durable, Reliable, Flexible & Smart Network for Harsh Environments

Certified to withstand harsh environment and provides reliable network connection, the industrial switch is ideal for industrial networks such as automotive, factory automation, oil and gas, mining, military, transportation, substation, energy and outdoor applications of railways, roads, tunnels, smart cities, city surveillance and traffic monitoring.



Certified Ruggedized Design



High/Low Temperature Resistance



Reliable Dual Redundancy



IGS-5416P, IGS-5408P, IGS-5208

Model No.	IGS-5416P	IGS-5408P	IGS-5208
	Gigabit Ethernet		
Total Port Count	20-Port	12-Port	10-Port
Description	Industrial 16-Port Gigabit PoE+ Web Managed Switch	Industrial 8-Port Gigabit PoE+ Web Managed Switch with 4 SFP Slots	Industrial 8-Port Gigabit Web Managed Switch with 2 SFP Slots
<b>Hardware</b>			
10/100/1000Base-T	16	8	8
SFP/SFP+ Slot	4 x SFP	4 x SFP	2 x SFP
PoE Port	8	8	-
Console Port	v	v	v
USB Port	1x USB 2.0 storage for firmware update, configuration backup, restore, boot up and system log		
DI/DO	DI x 1, DO x 1	DI x 1, DO x 1	DI x 1, DO x 1
Power Redundancy	Redundant Dual DC 48V-57V	Redundant Dual DC 48V-57V	Redundant Dual DC 12V-48V
Reserve Polarity Protection	v	v	v
Overload Current Protection	v	v	v
Alarm Contact	1A@24VDC	1A@24VDC	1A@24VDC
Housing	Ruggedized aluminum alloy case, IP30-rated		
Operation Temperature Range	-40 ~ 75°C	-40 ~ 75°C	-40 ~ 75°C
MTBF (Mean Time Between Failure)	>100,000 hours	>100,000 hours	>100,000 hours
Fan Type	Fanless	Fanless	Fanless
<b>Performance</b>			
Switching Capacity	40Gbps	24Gbps	20Gbps
Packet Buffer, bit	12M bit	12M bit	12M bit
MAC Address	16K	16K	16K
Jumbo Frame, Bytes	16K	16K	16K
Forwarding Rate	29.76Mpps	17.85Mpps	14.88Mpps
<b>PoE Power Management</b>			
Power Budget Management UI	v	v	-
PD Alive Check	v	v	-
PoE Scheduling	v	v	-
Total PoE Power Budget	240W	240W	-
<b>Management</b>			
Web Based Management	v	v	v
Telnet	v	v	v
SNMP (v1/v2c/v3)	v	v	v
<b>Physical</b>			
Dimension (LxWxH)	90.8 x 145 x 113 mm	72.2 x 145 x 113 mm	72.2 x 145 x 113 mm
Mounting Type	DIN-Rail	DIN-Rail	DIN-Rail
<b>Certification &amp; Standard</b>			
Vibration, Shock, Free-Fall	IEC60068-2-6, IEC60068-2-27, IEC60068-2-32		
EMC	61000-6-2, 61000-6-4	61000-6-2, 61000-6-4	61000-6-2, 61000-6-4
EMS	IEC61000-4-2 (ESD), IEC61000-4-3 (RS), IEC61000-4-4 (EFT), IEC61000-4-5 (Surge), IEC61000-4-6 (CS), IEC61000-4-8 (Magnetic Field)		
EMI	CE, FCC	CE, FCC	CE, FCC
Standards	IEEE 802.1Q VLAN, IEEE 802.1D STP, IEEE 802.1w RSTP, IEEE 802.1s MSTP, IEEE 802.3ad LACP, IEEE 802.1AB LLDP, ITU-T G.8032/Y.1344 ERPS		

## For Harsh Environments in Industrial IoT (IIoT) and Smart City



Manufacturing, Automotive



Energy Plant



Transportation, Smart City



Factory Automation



## Robust Industrial Unmanaged Switch

Durable, Reliable & Flexible Network for Harsh Environments

The EDIMAX Industrial DIN-Rail Unmanaged Switch comes with PoE+ Gigabit high-speed connections with IP30-rated, fanless rugged industrial design and rich features. The industrial switches offer easy efficient data transfer, plug-and-play, flexible-deployment, cost-effective, energy-efficient solution for various harsh industrial Networks.



- 6KV Lightning Surge Protection
- Wide Range Temperature
- Long Range Guaranteed 200M
- Reliable Power Redundancy
- QoS Improved Traffic Efficiency
- Flexible DIN-Rail and Wall Mount



IGS-1210P, IGS-1105P, IGS-1005

Model No.	IGS-1210P V2	IGS-1105P	IGS-1005
	Gigabit Ethernet		
Total Port Count	8-Port	5-Port	5-Port
Description	Industrial 10-Port Gigabit PoE+ Switch	Industrial 5-Port Gigabit PoE+ Switch	Industrial 5-Port Gigabit Switch
<b>Hardware</b>			
10/100/1000Base-T	8	4	5
SFP/SFP+ Slot	2 x SFP	1 x SFP	-
PoE Port (IEEE802.11at/af)	Port1-8	Port1-4	-
6 KV Surge Protection	Port1-8	Port1-4	Port1-5
Backbeed Protection	v	v	-
Power Redundancy	Redundant Dual DC 48V-55V	Redundant Dual DC 48V-55V	Redundant Dual DC 12V-48V
P-Fail	v	v	v
Reserve Polarity Protection	v	v	v
Overload Current Protection	v	v	v
PoE Power Budget	240W	120W	-
Long Range 200 Meter s+	v	v	v
Housing	Metal Case, IP30-rated	Metal Case, IP30-rated	Metal Case, IP30-rated
Fan Type	Fanless	Fanless	Fanless
Operation Temperature Range	-20 ~ 70°C	-20 ~ 70°C	-20 ~ 70°C
MTBF (Mean Time Between Failure)	>100,000 hours	>100,000 hours	>100,000 hours
Fan Type	Fanless	Fanless	Fanless
<b>Performance</b>			
Switching Capacity	20Gbps	10Gbps	10Gbps
Packet Buffer, bit	1.5M bit	2M bit	2M bit
MAC Address	4K	2K	2K
Jumbo Frame, Bytes	9K	9K	9K
Forwarding Rate	14.88Mpps	7.44Mpps	7.44Mpps
QoS(IEEE 802.1p)	v	v	v
<b>Physical</b>			
Dimension (LxWxH)	210 x 45 x 160.6 mm	180 x 32 x 130 mm	127.5 x 30 x 83.6 mm
Mounting Type	DIN-Rail	DIN-Rail	DIN-Rail
<b>Others</b>			
Certification	CE/FCC/BSMI		

# Exceptional Business Wi-Fi. Always Stays Connected

## Easy Deployment, Built for Professional Heavy Users

A series of business grade EDIMAX Pro Access Points allows businesses to build a reliable, cost-effective wireless network that goes from indoors to outdoors and long range Wi-Fi connectivity. The EDIMAX Pro Wi-Fi drives progress, maintain employee productivity and customer satisfaction.



High Speed & Efficiency



Wide Coverage



Reliable Connection



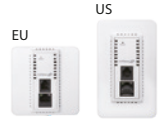
High Density for BYOD



Secure Access



Free & Flexible Management



### Indoor Access Point

Model No.	CAX1800	CAP1750	CAP1300	CAP1200	CAP300	IAP1200
	Ceiling Mount					In-Wall
Description	2x2 AX Dual-Band Ceiling Mount PoE	3x3 AC Dual-Band Ceiling Mount PoE	2x2 AC Wave 2 Dual-Band Ceiling Mount PoE	2x2 AC Dual-Band Ceiling Mount PoE	2x2 N Ceiling Mount PoE	2x2 AC Dual-Band In-Wall PoE
WiFi Standards	802.11 a/b/g/n/ac/ax	802.11 a/b/g/n/ac	802.11 a/b/g/n/ac	802.11 a/b/g/n/ac	802.11b/g/n	802.11 a/b/g/n/ac
Antenna	Type: 2 x Built-In PIFA (2 Dual-Band) Gain: 2.2dBi (2.4GHz), 2.9dBi (5GHz) Max.	Type: 4 x Built-In PIFA (2 x 2.4GHz, 2 x 5GHz) Gain: 4dBi (2.4GHz), 5dBi (5GHz) Max.	Type: 4 x Built-In PIFA (2 x 2.4GHz, 2 x 5GHz) Gain: 4dBi (2.4GHz), 5dBi (5GHz) Max.	Type: 4 x Built-In PIFA (2 x 2.4GHz, 2 x 5GHz) Gain: 2.82dBi (2.4GHz), 4dBi (5GHz) Max.	Type: 2 x Built-In PIFA Gain: 2.82dBi Max.	Type: 2 x Built-In PIFA (2 Dual-Band) Gain: 2.14dBi (2.4GHz), 3.8dBi (5GHz) Max.
Maximum Theoretical Throughput	5GHz: 1201Mbps 2.4GHz: 574Mbps	5GHz: 1300Mbps 2.4GHz: 450Mbps	5GHz: 867Mbps 2.4GHz: 400Mbps	5GHz: 867Mbps 2.4GHz: 300Mbps	2.4GHz: 300Mbps	5GHz: 867Mbps 2.4GHz: 300Mbps
LAN Interface	GbE X1	GbE X1	GbE X2	GbE X1	GbE X1	GbE X2
Power Input	PoE 802.3at/af; DC12V/2A	PoE 802.3at/af; DC12V/2A	PoE 802.3at/af; DC12V/1A	PoE 802.3at/af; DC12V/1A	PoE 802.3at/af; DC12V/1A	PoE 802.3at/af
Power Consumption (Max.)	12W	19.5W (with USB port)	11W	11W	6.5W	8W
No. of SSID	16+16	16+16	16+16	16+16	16	16+16
Concurrent Clients	2.4GHz:128; 5GHz:128	2.4GHz:50; 5GHz:50	2.4GHz:100; 5GHz:100	2.4GHz:50; 5GHz:50	2.4GHz:50	2.4GHz:50; 5GHz:50
802.11 r /k Roaming	v	v	v	v (only 5G)	-	-
Beamforming / AirTime Fairness	v	-	v	-	-	-
Mode	<ul style="list-style-type: none"> <li>Standalone AP mode</li> <li>Master AP mode: Manage 16 APs</li> <li>Managed AP mode: Be managed by CAP/WAP series /OAP1750 Master AP with NMS &amp; APC500</li> </ul>	<ul style="list-style-type: none"> <li>Standalone AP mode</li> <li>Master AP mode: Manage 16 APs</li> <li>Managed AP mode: Be managed by CAP/WAP series /OAP1750 Master AP with NMS &amp; APC500</li> </ul>	<ul style="list-style-type: none"> <li>Standalone AP mode</li> <li>Master AP mode: Manage 16 APs</li> <li>Managed AP mode: Be managed by CAP/WAP series /OAP1750 Master AP with NMS &amp; APC500</li> </ul>	<ul style="list-style-type: none"> <li>Standalone AP mode</li> <li>Master AP mode: Manage 8 APs</li> <li>Managed AP mode: Be managed by CAP/WAP series /OAP1750 Master AP with NMS</li> </ul>	<ul style="list-style-type: none"> <li>Standalone AP mode</li> <li>Master AP mode: Manage 8 APs</li> <li>Managed AP mode: Be managed by CAP/WAP series /OAP1750 Master AP with NMS</li> </ul>	<ul style="list-style-type: none"> <li>Standalone AP mode</li> <li>Managed AP mode: Be managed by CAP/WAP series /OAP1750 Master AP with NMS &amp; APC500</li> <li>For hotel / apartment building deployment</li> </ul>



### Indoor and Outdoor Access Point

Model No.	WAP1750	OAP1750	OAP1300	OAP1300 V2	OAP900
	Wall Mount		Outdoor Pole-Mount		
Description	3x3 AC Dual-Band Wall Mount PoE	3x3 AC Dual-Band Outdoor PoE	2x2 AC Wave 2 Dual-Band Outdoor PoE	2x2 AC Wave 2 Dual-Band Outdoor PoE	2x2 AC 5GHz Outdoor PoE
WiFi Standards	802.11 a/b/g/n/ac	802.11 a/b/g/n/ac	802.11 a/b/g/n/ac	802.11 a/b/g/n/ac	802.11 a/b/g/n/ac
Antenna	Type: 3 x External Gain: 2dBi (2.4GHz), 2dBi (5GHz)	Type: 6 x Built-In PIFA (3 x 2.4GHz, 3 x 5GHz) Gain: 4.38dBi (2.4GHz), 5.34dBi (5GHz) Max.	Type: 2 x External Gain: 3.9dBi (2.4GHz), 4.4dBi (5GHz)	Type: 2 x Built-in Omni (2 x Dual-Band) Gain: 5dBi (2.4GHz), 14dBi (5GHz)	Type: 2 x Internal Patch Gain: 15dBi (5GHz) 2 x SMA Connectors for External Ant.
Maximum Theoretical Throughput	5GHz: 1300Mbps 2.4GHz: 450Mbps	5GHz: 1300Mbps 2.4GHz: 450Mbps	5GHz: 867Mbps 2.4GHz: 400Mbps	5GHz: 867Mbps 2.4GHz: 400Mbps	5GHz: 900Mbps
LAN Interface	GbE X2	GbE X2	GbE X2	GbE X2	GbE X2
PoE	Power In: PoE 802.3at; DC12V/4A PoE Output:10W	Power In: PoE 802.3at	Power Input: PoE 802.3at PoE Output: 802.3af	Power In: PoE 802.3at PoE Output: 802.3af	Passive PoE Input PoE Output
Power Consumption (Max.)	15W	22W	15W	15W	10.6W
No. of SSID	16+16	16+16	16+16	16+16	16
Concurrent Clients	2.4GHz:50; 5GHz:50	2.4GHz:50; 5GHz:50	2.4GHz:100; 5GHz:100	2.4GHz:100; 5GHz:100	5GHz:50
802.11 r /k Roaming	v	v	v	v	v
Beamforming / AirTime Fairness	-	-	v	v	-
Mode	<ul style="list-style-type: none"> <li>Standalone AP mode</li> <li>Master AP mode: Manage 16 APs</li> <li>Managed AP mode: Be managed by CAP/WAP series /OAP1750 Master AP with NMS &amp; APC500</li> </ul>	<ul style="list-style-type: none"> <li>Standalone AP mode</li> <li>Master AP mode: Manage 16 APs</li> <li>Managed AP mode: Be managed by CAP/WAP series /OAP1750 Master AP with NMS &amp; APC500</li> </ul>	<ul style="list-style-type: none"> <li>Standalone AP mode</li> <li>Managed AP mode: Be managed by CAP/WAP series /OAP1750 Master AP with NMS &amp; APC500</li> </ul>	<ul style="list-style-type: none"> <li>Standalone AP mode</li> <li>Managed AP mode: Be managed by CAP/WAP series /OAP1750 Master AP with NMS &amp; APC500</li> </ul>	<ul style="list-style-type: none"> <li>Standalone AP mode</li> <li>Managed AP mode: Be managed by CAP/WAP series /OAP1750 Master AP with NMS &amp; APC500</li> </ul>

# Superior High-Speed & Performance Wi-Fi System



## AX1800 Wi-Fi 6, Pre-Configured Easy Setup, Expandable Wi-Fi

The PrimeAX 1-2-3 Wi-Fi system comes with the IEEE 802.11ax Wi-Fi 6 technology for wireless speeds up to 1800Mbps (574Mbps at 2.4GHz and 1201Mbps at 5GHz). Expect enterprise-grade performance and build quality, combined with user-friendly operation, easy deployment, super-fast wireless speed, an extensive feature set and a practical, ceiling-mount design make an ideal dual-band solution for enterprise environments.



The PrimeAX 1-2-3 2-pack kit equipped with pre-configured Master and Slave AX1800 APs achieves seamless Wi-Fi coverage and eliminates Wi-Fi dead zones. The built-in smart wizard makes network setup a breeze, you can easily configure and find your paired devices via the Device Discovery Tool which also includes security features (WPA/WPA2/WPA3 and more). What's more, the PrimeAX 1-2-3 featured AX technology such as BSS coloring, DL/UL OFDMA, DL/UL MU-MIMO, TWT (provides improvements in throughput), multi-device support, and Wi-Fi spectrum efficiency for streaming, gaming, media sharing, increases battery life efficiency for devices and reduce power consumption.

### Ordering Information:

#### 2-pack:

PrimeAX 1-2-3 (Master) &  
PrimeAX 1-2-3 (Slave)

#### 1-pack:

PrimeAX +1

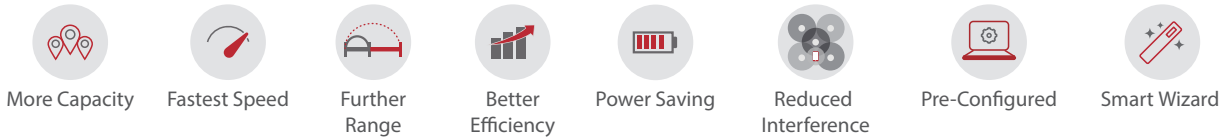


### Smart and Easy Setup!



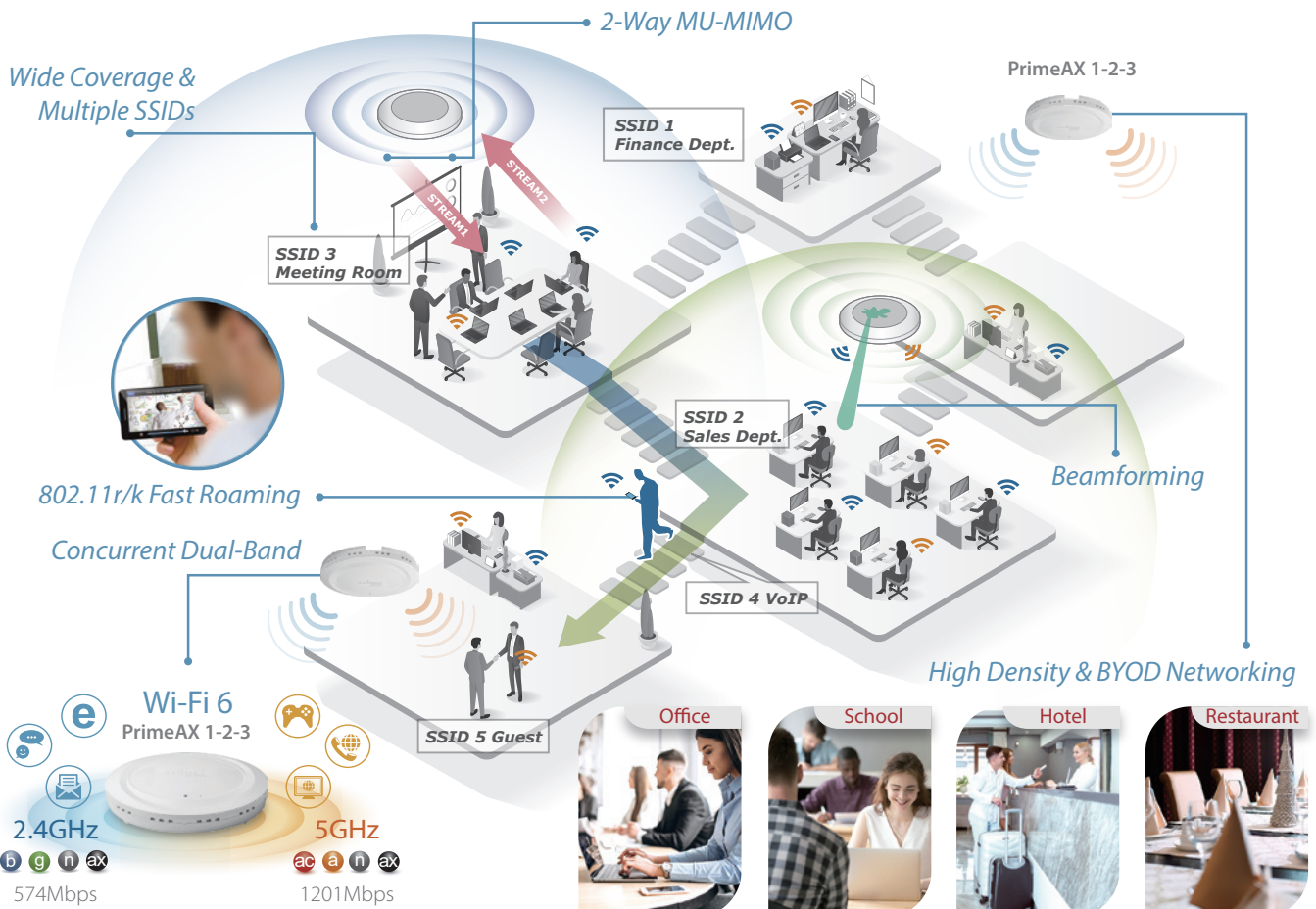
1. Power on the PrimeAX 1-2-3 APs and connect the APs to the existing network switch. (APs can be powered on by PoE)
2. Access the Smart Wizard with a web browser. (Dedicated IP address listed on the label)
3. Follow the Smart Wizard instructions to configure the Wi-Fi networks in just a few steps

### 802.11AX Technology Features and Benefits



### Expandable Wi-Fi System

PrimeAX 1-2-3 includes 2 APs and is expandable with PrimeAX +1 Add-on AP, up to a total of 16 APs.





# Smart, Secure and Self-Managed Wi-Fi

Easy, Complete, Expandable Office Wi-Fi System for Business and Home from Indoor to Outdoor

The Office 1-2-3 Office Wi-Fi System starter kit comes with three pre-configured access points that can communicate between themselves with self-managed functions for easy setup. The system is expandable with CAP1300 Office +1 (indoor ceiling-mount)/OAP1300 Office +1 (outdoor) Add-on AP, up to a total of 16 APs with zero configuration\*. Built-in with the AP management software, no need for server or controller software and no extra license

\* Zero configuration: Once the Office 1-2-3 Master AP had been installed, the slave APs or add-on APs are automatically configured with master AP while connected to the existing network.

**OFFICE 1-2-3**



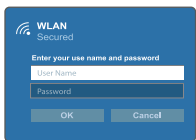
## Easy Setup!

Get Your Office Wi-Fi Up and Running in Minutes!

- Connect the Office 1-2-3 / Office +1 APs to the existing network via switch. (APs can be powered on by PoE)
- Download the IP Finder utility and the system will find the Office 1-2-3 APs automatically.
- Follow the wizard instructions of web- and icon-based UI and easily configure the Wi-Fi network in just a few steps.

## Secured, Separated 3 Wi-Fi Networks

## Expandable Indoor & Outdoor Wi-Fi System up to 16 APs



### Office Network

Each employee has his/ her own Wi-Fi access account and password.



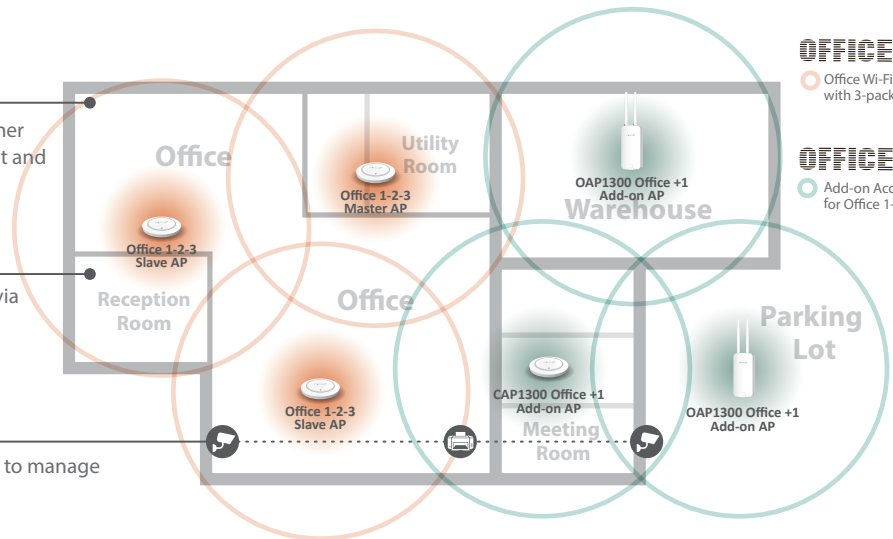
### Guest Network

Login to guest network via captive portal and SMS authentication.

Device Name	MAC Address
IPCAM1	00:34:45:66:1A:01
IPCAM2	00:34:45:66:1A:02
IPCAM3	00:34:45:66:1A:03
Printer1	00:34:45:66:1A:04
Printer2	00:34:45:66:1A:05

### Device Network

Access Control List (ACL) to manage wireless equipments.



**OFFICE 1-2-3**  
Office Wi-Fi System with 3-pack Access Point

**OFFICE +1**  
Add-on Access Point for Office 1-2-3

## Dedicated Office Wi-Fi System for SMBs

Suitable for a wide range of office spaces such as the working area, meeting room, open space, lobby, warehouse, parking lot and others from indoor to outdoor as well as the home office and large house.



## Ordering Information:

### Office 1-2-3 & Office +1 Product Family

Office 1-2-3 Wi-Fi System, 3-Pack



Office 1-2-3 Master AP

CAP1300 Office +1 Indoor Add-on AP



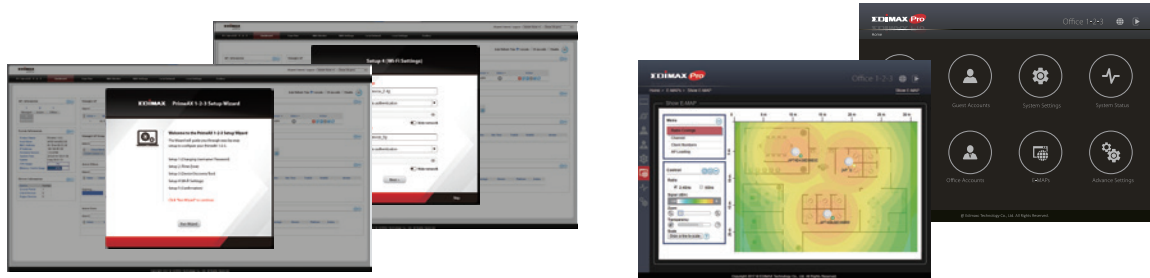
OAP1300 Office +1 Outdoor Add-on AP



# Choice of Network Management



Model No.	APC500	NMS
Where to Use	For SMB/SME Level	For Small Project and Offices
Highlight	<ul style="list-style-type: none"> <li>· Manages up to 200 EDIMAX Pro APs</li> <li>· Stand-Alone Box</li> <li>· Centralized &amp; Remote Management</li> <li>· Support Gigabit Ports and USB 3.0</li> <li>· Built-in Radius Server</li> </ul>	<ul style="list-style-type: none"> <li>· Manages up to 8 or 16 Edimax Pro APs (One Master AP Manages Other APs)</li> <li>· Free, Built-in with EDIMAX Pro CAP/WAP/CAX Series and OAP1750 AP</li> <li>· AP Array Architecture</li> <li>· Built-in Radius Server, No Need for Extra Server and Hardware Controller</li> </ul>
Applied Models	All EDIMAX Pro APs (except PrimeAX 1-2-3 & Office 1-2-3 series)	All EDIMAX Pro APs (Built-in with CAP/WAP/CAX series and OAP1750 APs)



Model No.	PrimeAX 1-2-3	OFFICE 1-2-3
Where to Use	For offices, schools, hotels, hospitals, retail shops or shopping malls with High-Speed	For Small Business and Offices
Highlight	<ul style="list-style-type: none"> <li>· Managed up to 16 PrimeAX 1-2-3 series APs (One Master AP Manages Other APs)</li> <li>· Free, Built-in with PrimeAX 1-2-3 series AP</li> </ul>	<ul style="list-style-type: none"> <li>· Manages up to 16 Office 1-2-3 series APs (One Master AP Manages Other APs)</li> <li>· Free, Built-in with Office 1-2-3 series AP.</li> </ul>
Applied Models	All PrimeAX 1-2-3 series APs Only	All Office 1-2-3 series APs Only



[www.edimax.com](http://www.edimax.com)

**Edimax Technology Co., Ltd.**  
 No. 278, Xinhua 1st Rd., Neihu Dist.,  
 Taipei City, Taiwan  
 Email: [support@edimax.com.tw](mailto:support@edimax.com.tw)

**Edimax Technology Europe B.V.**  
 Fijenhof 2, 5652 AE Eindhoven,  
 The Netherlands  
 Email: [support@edimax.nl](mailto:support@edimax.nl)

**Edimax Computer Company**  
 530 Technology Drive Suite 100, Irvine,  
 CA 92618, USA  
 Email: [support@edimax.us](mailto:support@edimax.us)